

"For Reference Only"

UR S

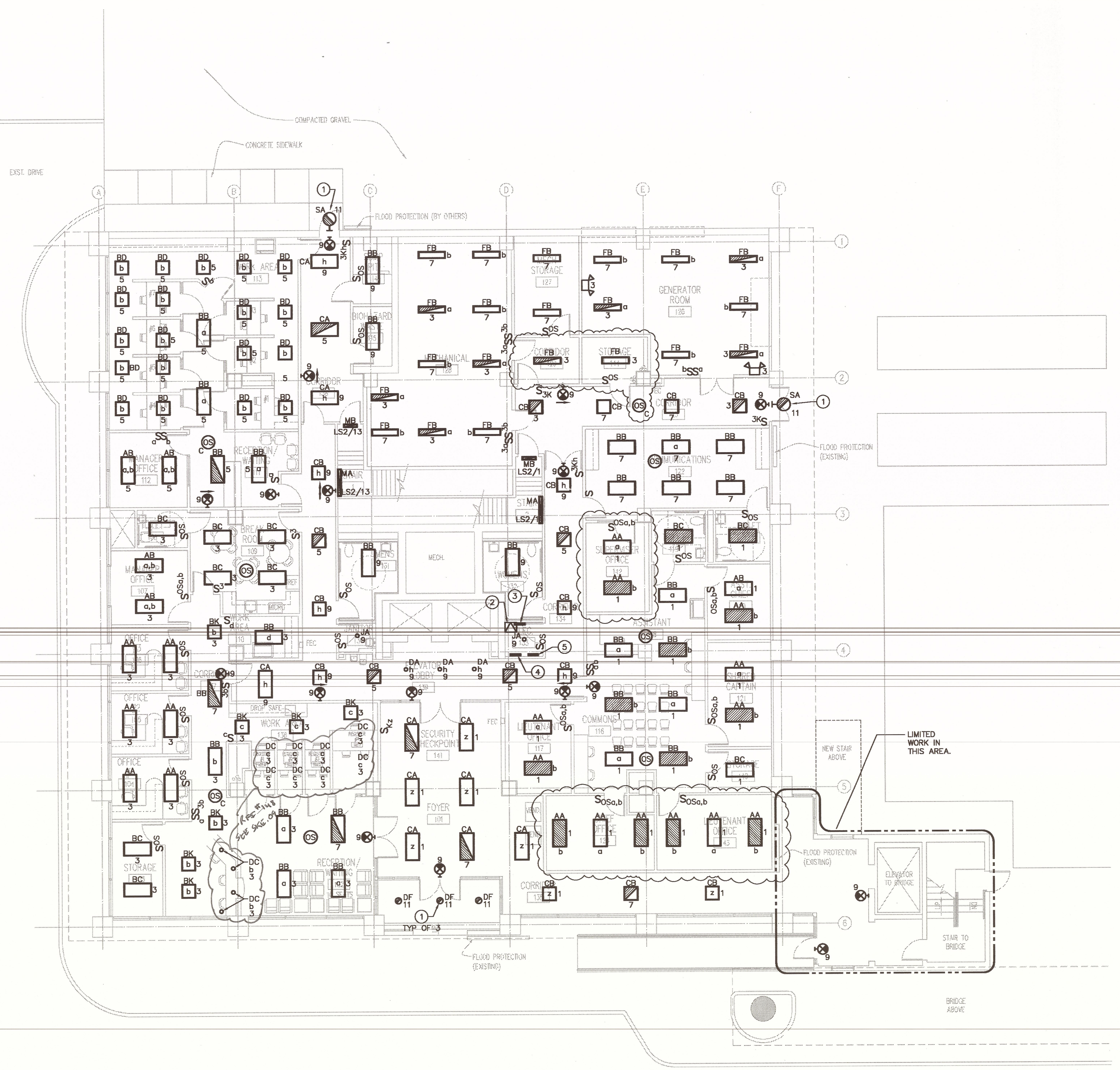
PROJECT: TEMPORARY UNIVERSITY HOSPITAL
 4 LEVEL TRAUMA CENTER
 PROJECT # 01-107-05B-13, PART GB
 SUBJECT PACKAGE F - ELECTRICAL

DATE: 11/16/08
 DRAWN BY: MCH
 SHEET NO.: E201
 CHECKED BY: MCH

FROM REV 148 SKE.09

GENERAL NOTES
 1. UNNECESSARY CANNOT BE SHOWN BY THIS PLAN
 2. UNNECESSARY CANNOT BE SHOWN BY THIS PLAN

SHEET KEY NOTES
 1. APPROVED LOCATIONS OF EXISTING BRANCH PANELS
 2. APPROVED LOCATIONS OF EXISTING BRANCH PANELS
 3. APPROVED LOCATIONS OF EXISTING BRANCH PANELS
 4. APPROVED LOCATIONS OF EXISTING BRANCH PANELS
 5. APPROVED LOCATIONS OF EXISTING BRANCH PANELS
 6. APPROVED LOCATIONS OF EXISTING BRANCH PANELS
 7. APPROVED LOCATIONS OF EXISTING BRANCH PANELS
 8. APPROVED LOCATIONS OF EXISTING BRANCH PANELS
 9. APPROVED LOCATIONS OF EXISTING BRANCH PANELS
 10. APPROVED LOCATIONS OF EXISTING BRANCH PANELS
 11. APPROVED LOCATIONS OF EXISTING BRANCH PANELS
 12. APPROVED LOCATIONS OF EXISTING BRANCH PANELS
 13. APPROVED LOCATIONS OF EXISTING BRANCH PANELS
 14. APPROVED LOCATIONS OF EXISTING BRANCH PANELS
 15. APPROVED LOCATIONS OF EXISTING BRANCH PANELS
 16. APPROVED LOCATIONS OF EXISTING BRANCH PANELS
 17. APPROVED LOCATIONS OF EXISTING BRANCH PANELS
 18. APPROVED LOCATIONS OF EXISTING BRANCH PANELS



GENERAL NOTES

- A. LIGHT LINES INDICATE EXISTING TO REMAIN. HEAVY SOLID LINES INDICATE NEW WORK.
- B. FOR ELECTRICAL LEGENDS AND ABBREVIATIONS SEE DRAWING E000.
- C. FOR LIGHTING FIXTURE SCHEDULE SEE DRAWINGS E500 AND E501.
- D. FOR THIS DRAWING, NORMAL LIGHTING FIXTURES SHALL BE WIRED TO PANEL 'H1', UNO. FOR LOCATION OF PANEL 'H1' SEE DRAWING E301.
- E. FOR THIS DRAWING, EQUIPMENT BRANCH LIGHTING FIXTURES SHALL BE WIRED TO PANEL 'ES2', UNO. FOR LOCATION OF PANEL 'ES2' SEE DRAWING E302.
- F. FOR THIS DRAWING, LIFE SAFETY BRANCH LIGHTING FIXTURES AND EXIT SIGNS SHALL BE WIRED TO PANEL 'LS2', UNO. FOR LOCATION OF PANEL 'LS2' SEE DRAWING E302.
- G. MINIMUM CONDUCTOR SIZE FOR LIGHTING CIRCUITS SHALL BE #12 AWG. FOR 120V LIGHTING CIRCUITS WITH HOMERUN OVER 50 LINEAR FEET, MINIMUM WIRE SIZE SHALL BE #10 AWG.
- H. FOR LIGHT SWITCH MOUNTING HEIGHTS, SEE TYPICAL DEVICE MOUNTING DETAIL ON SHEET E502.
- I. PROVIDE SEPARATE NEUTRAL FOR ALL DIMMING CIRCUITS.

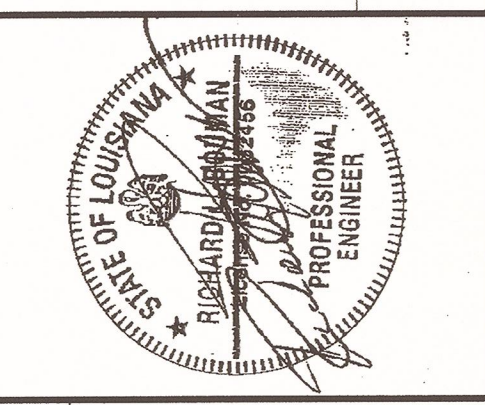
SPECIFIC NOTES

- 1 LIGHTING FIXTURE TO BE CONTROLLED THRU PHOTOCELL. FOR WIRING DIAGRAM SEE DETAIL ON SHEET E502.
- 2 15KVA TRANSFORMER FOR PANEL 'ESL1' MOUNTED ON WALL ABOVE PANELS
- 3 PANEL 'ESL1'
- 4 APPROXIMATE LOCATION OF EXISTING 480/277V PANEL 'H1'.
- 5 APPROXIMATE LOCATION OF EXISTING 208/120V PANEL 'L1'.

E1 FLOOR 1 LIGHTING PLAN
 1/8" = 1'-0"

BltchKnevel
 ARCHITECTS

NEW ORLEANS, LOUISIANA 70130
 757 ST. CHARLES AVENUE
 (504) 524-4634



URS
 architects • engineers • planners

CONSULTANTS:

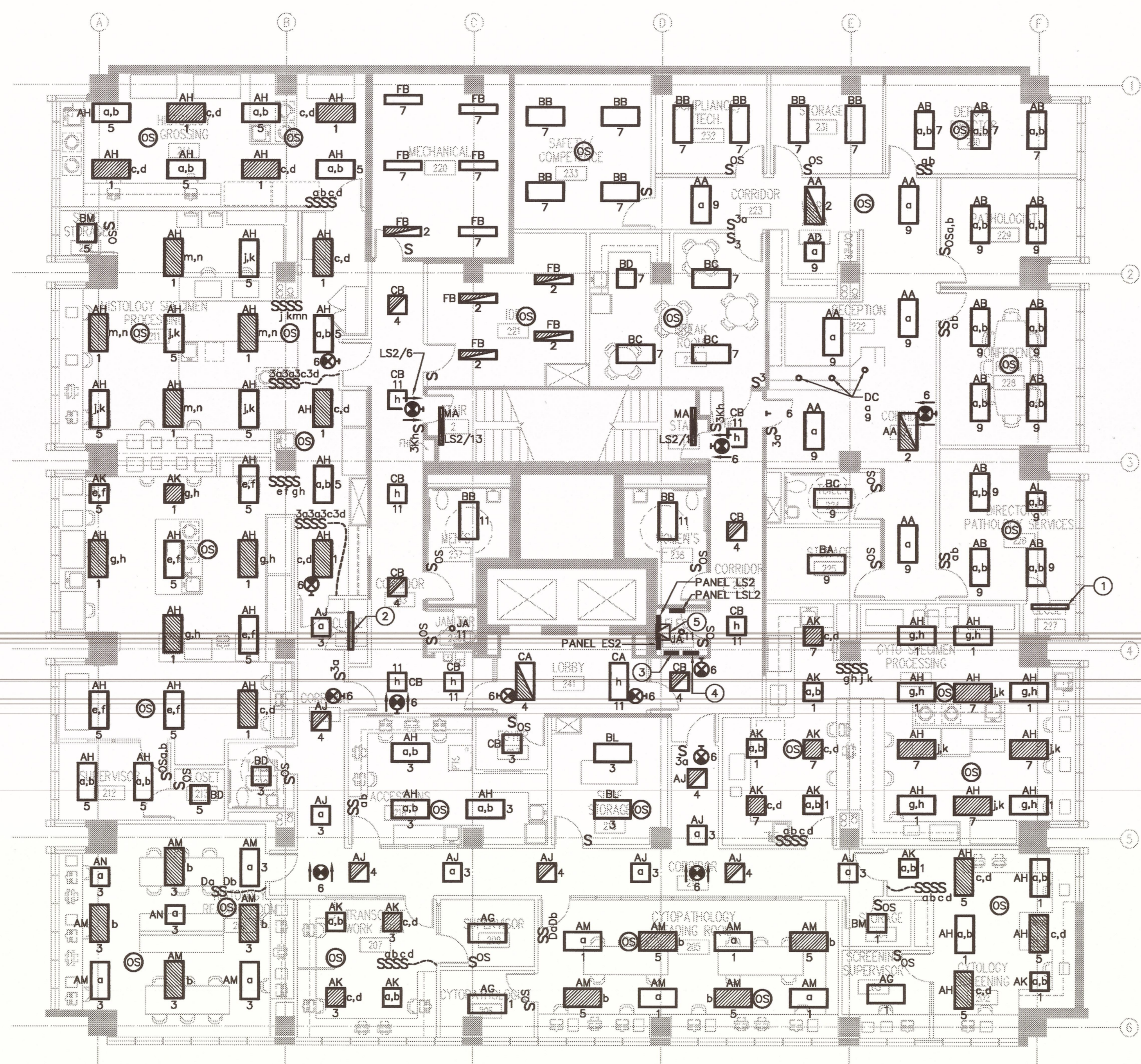
INTERIM UNIVERSITY HOSPITAL & LEVEL I TRAUMA CENTER
 PROJECT NUMBER: 01-107-05B-13, Part GB
 STATE ID: 1-36-069 STATE ID NO.: 09923

LSU University Hospital
 HEALTH CARE SERVICE DIVISION
 Medical Center of Louisiana at New Orleans

MARK	DATE	DESCRIPTION
DRAWING ISSUED:	2/11/08	
PROJECT NO:	0580-F	
DRAWING TITLE:	FLOOR 1 LIGHTING PLAN	
DRAWING NUMBER:	E201	
	SHEET 174 OF 234	

PACKAGE
F
 UMOB, ELEV. TOWER, GARAGE DEMO, IH LAB / UMOB ROOFS + FUEL TANKS

"For Reference Only"

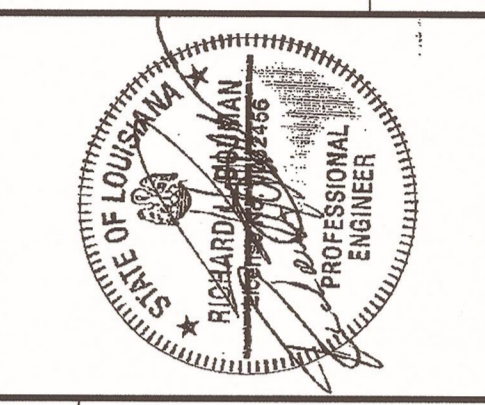


GENERAL NOTES

- A. LIGHT LINES INDICATE EXISTING TO REMAIN. HEAVY SOLID LINES INDICATE NEW WORK.
- B. FOR ELECTRICAL LEGENDS AND ABBREVIATIONS SEE DRAWING E000.
- C. FOR LIGHTING FIXTURE SCHEDULE SEE DRAWINGS E500 AND E501.
- D. FOR THIS DRAWING, NORMAL LIGHTING FIXTURES SHALL BE WIRED TO PANEL 'H2', UNO. FOR LOCATION OF PANEL 'H2' SEE DRAWING E302.
- E. FOR THIS DRAWING, EQUIPMENT BRANCH LIGHTING FIXTURES SHALL BE WIRED TO PANEL 'ES2', UNO. FOR LOCATION OF PANEL 'ES2' SEE DRAWING E302.
- F. FOR THIS DRAWING, LIFE SAFETY BRANCH LIGHTING FIXTURES AND EXIT SIGNS SHALL BE WIRED TO PANEL 'LS2', UNO. FOR LOCATION OF PANEL 'LS2' SEE DRAWING E302.
- G. MINIMUM CONDUCTOR SIZE FOR LIGHTING CIRCUITS SHALL BE #12 AWG. FOR 120V LIGHTING CIRCUITS WITH HOMERUN OVER 50 LINEAR FEET, MINIMUM WIRE SIZE SHALL BE #10 AWG.
- H. FOR LIGHT SWITCH MOUNTING HEIGHTS, SEE TYPICAL DEVICE MOUNTING DETAIL ON SHEET E502.
- I. PROVIDE SEPERATE NEUTRAL FOR ALL DIMMING CIRCUITS.

BltchKnevel
ARCHITECTS

NEW ORLEANS, LOUISIANA 70130
757 ST. CHARLES AVENUE
(504) 524-4634
FAX (504) 524-5128



URS
architects • engineers • planners

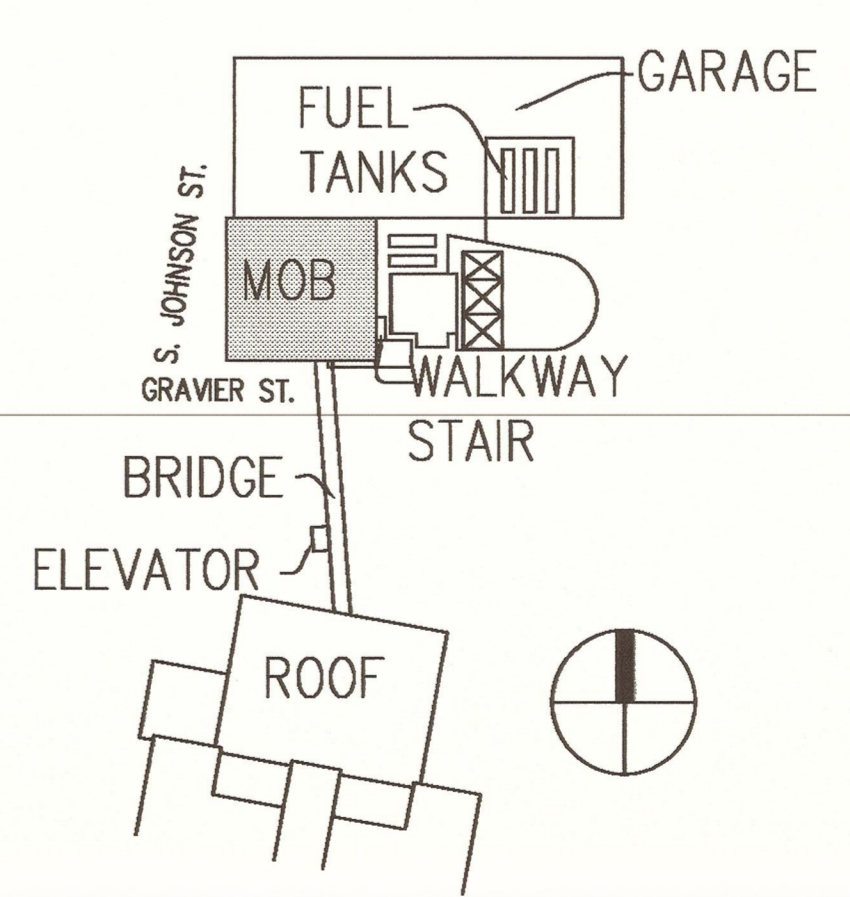
CONSULTANTS:
INTERIM UNIVERSITY HOSPITAL & LEVEL I TRAUMA CENTER
PROJECT NUMBER: 01-107-05B-13, Part GB
SITE ID: 1-35-05B STATE ID NO: 09923

LSU University Hospital
HEALTH CARE SERVICE DIVISION
Medical Center of Louisiana at New Orleans

SPECIFIC NOTES

- 1 PROVIDE TYPE 'KA' LIGHTING FIXTURE (SEE FIXTURE SCHEDULE) WALL MOUNTED ABOVE DOOR IN CLOSET ROOM 227. PROVIDE LOCAL SWITCH WITH OCCUPANCY SENSOR AND CIRCUIT TO 'H2/9'.
- 2 PROVIDE TYPE 'KA' LIGHTING FIXTURE (SEE FIXTURE SCHEDULE) WALL MOUNTED ABOVE DOOR IN CLOSET ROOM 215. PROVIDE LOCAL SWITCH WITH OCCUPANCY SENSOR AND CIRCUIT TO 'H2/3'.
- 3 APPROXIMATE LOCATION OF EXISTING 480/277V PANEL 'H2'.
- 4 APPROXIMATE LOCATION OF EXISTING 208/120V PANEL 'L2'.
- 5 15KVA TRANSFORMER FOR PANEL 'LS2' MOUNTED ON WALL ABOVE PANELS.

KEYPLAN

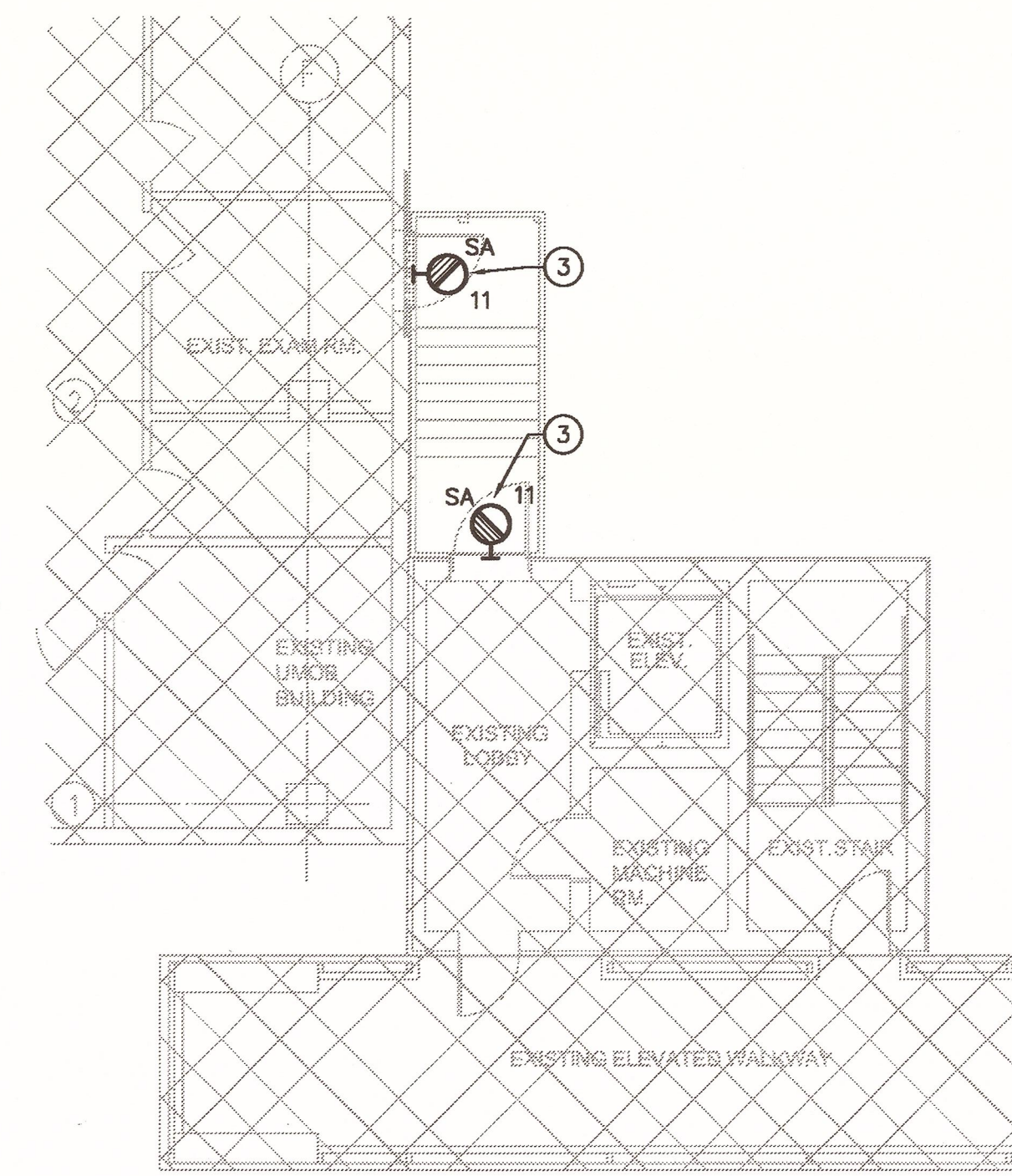


PACKAGE
F UMOB, ELEV. TOWER, GARAGE DEMO, IH LAB / UMOB ROOFS + FUEL TANKS

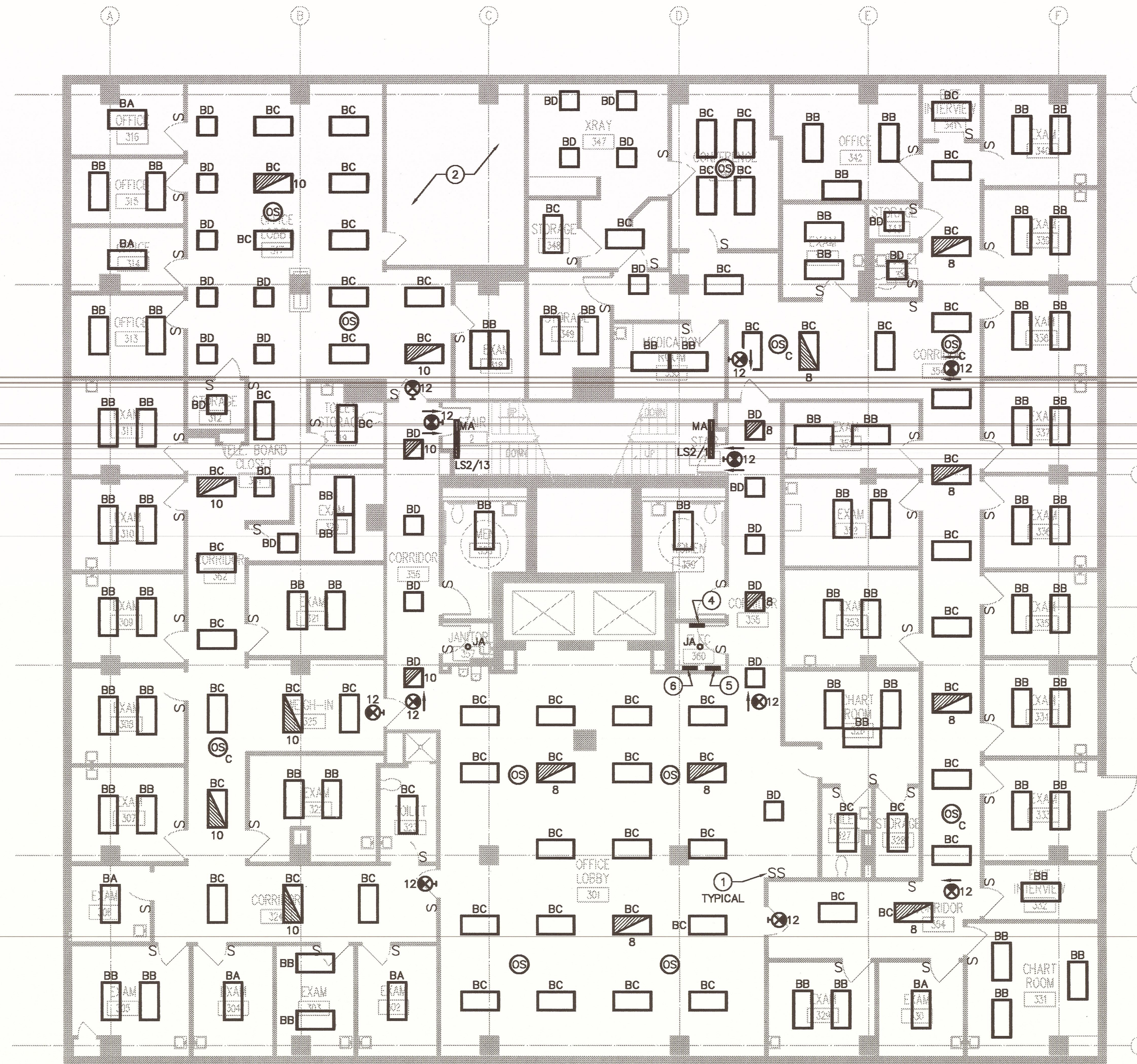
E1 FLOOR 2 LIGHTING PLAN
1/8" = 1'-0"

MARK	DATE	DESCRIPTION
		DRAWING ISSUED: 2/11/08
		PROJECT NO: 0580-F
		DRAWING TITLE: FLOOR 2 LIGHTING PLAN
		DRAWING NUMBER: E202
		SHEET 175 OF 234

"For Reference Only"



E2 ELEVATED WALKWAY STAIR LIGHTING PLAN
1/8" = 1'-0"



E1 FLOOR 3 LIGHTING PLAN
1/8" = 1'-0"

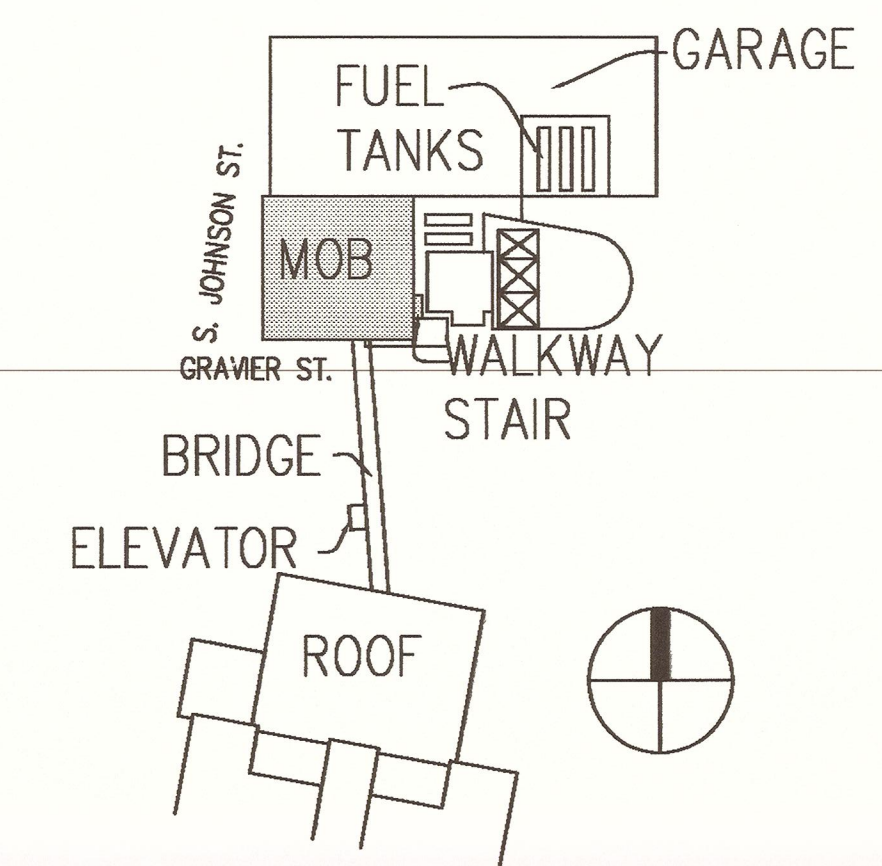
GENERAL NOTES

- A. LIGHT LINES INDICATE EXISTING TO REMAIN. HEAVY SOLID LINES INDICATE NEW WORK.
- B. FOR ELECTRICAL LEGENDS AND ABBREVIATIONS SEE DRAWING E000.
- C. FOR LIGHTING FIXTURE SCHEDULE SEE DRAWINGS E500 AND E501.
- D. FOR THIS DRAWING, ALL NORMAL LIGHTING FIXTURES SHALL BE RECONNECT TO EXISTING BRANCH CIRCUIT CONDUIT AND WIRING, CONTROLS, FIXTURE WHIPS AND CIRCUIT BREAKERS SAVED UNDER DEMOLITION. PROVIDE NEW FIXTURE WHIPS AND EXTEND CONDUIT AND WIRING AS REQUIRED. FIELD VERIFY EXACT LOCATION OF ALL EXISTING EQUIPMENT. ALL NORMAL LIGHTING SHALL BE CIRCUITED TO PANEL 'H3'. FOR LOCATION OF PANEL 'H3' SEE DRAWING E303. THIS CONTRACTOR TO PROVIDE AN UPDATED PANEL SCHEDULE AT THE CONCLUSION OF WORK.
- E. FOR THIS DRAWING, LIFE SAFETY BRANCH LIGHTING FIXTURES AND EXIT SIGNS SHALL BE WIRED TO PANEL 'LS2', UNO. FOR LOCATION OF PANEL 'LS2' SEE DRAWING E302.
- F. MINIMUM CONDUCTOR SIZE FOR LIGHTING CIRCUITS SHALL BE #12 AWG. FOR 120V LIGHTING CIRCUITS WITH HOMERUN OVER 50 LINEAR FEET, MINIMUM WIRE SIZE SHALL BE #10 AWG.
- G. FOR LIGHT SWITCH MOUNTING HEIGHTS, SEE TYPICAL DEVICE MOUNTING DETAIL ON SHEET E502.
- H. PROVIDE SEPERATE NEUTRAL FOR ALL DIMMING CIRCUITS.

SPECIFIC NOTES

- 1 EXISTING SINGLE POLE SINGLE THROW SWITCH.
- 2 FOR LIGHTING IN THIS AREA SEE DRAWING E202.
- 3 LIGHTING FIXTURE TO BE CONTROLLED THRU PHOTOCELL. FOR WIRING DIAGRAM SEE DETAIL ON SHEET E502.
- 4 APPROXIMATE LOCATION OF EXISTING 480/277V PANEL 'H3'.
- 5 APPROXIMATE LOCATION OF EXISTING 208/120V PANEL 'L3'.
- 6 APPROXIMATE LOCATION OF EXISTING 480/277V PANEL 'H3A'.

KEYPLAN



PACKAGE

F

UMOB, ELEV.
TOWER, GARAGE
DEMO, IH LAB /
UMOB ROOFS
+
FUEL TANKS

BltchKnevel
ARCHITECTS

757 ST. CHARLES AVENUE
NEW ORLEANS, LOUISIANA 70130
(504) 524-4634 FAX (504) 524-5128



URS
architects • engineers • planners

CONSULTANTS:

INTERIM UNIVERSITY HOSPITAL & LEVEL I TRAUMA CENTER
PROJECT NUMBER: 0-107-08B-13, Part GB
SITE ID: F-30-089 STATE ID NO: 09923

LSU University Hospital
HEALTH CARE SERVICE DIVISION
Medical Center of Louisiana at New Orleans

MARK	DATE	DESCRIPTION

DRAWING ISSUED: 2/11/08

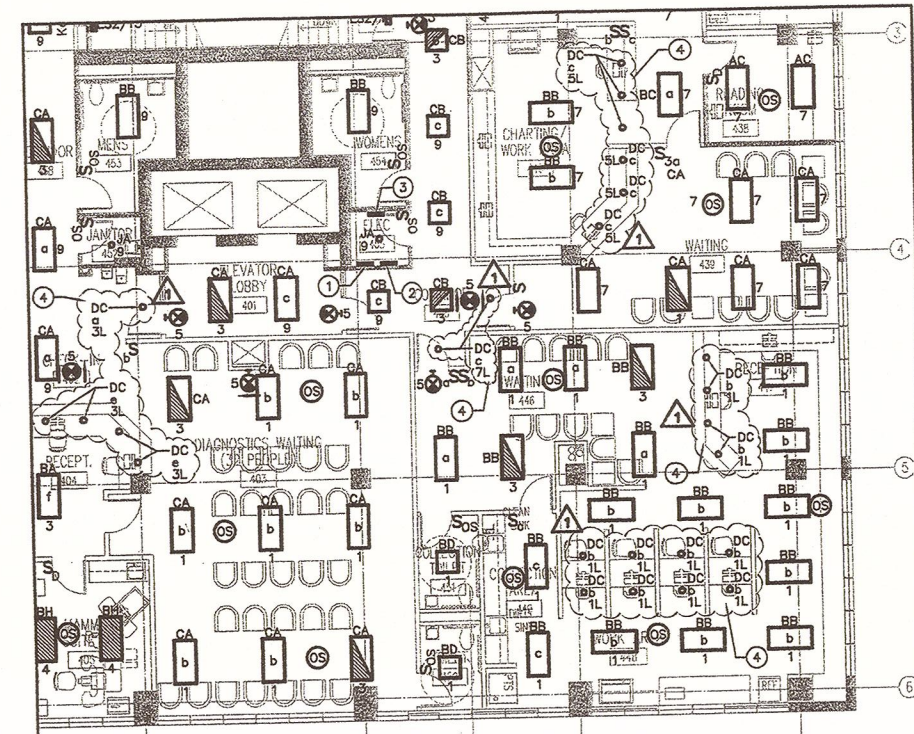
PROJECT NO: 0580-F

DRAWING TITLE:
FLOOR 3
LIGHTING
PLAN

DRAWING NUMBER:

E203

SHEET 176 OF 234

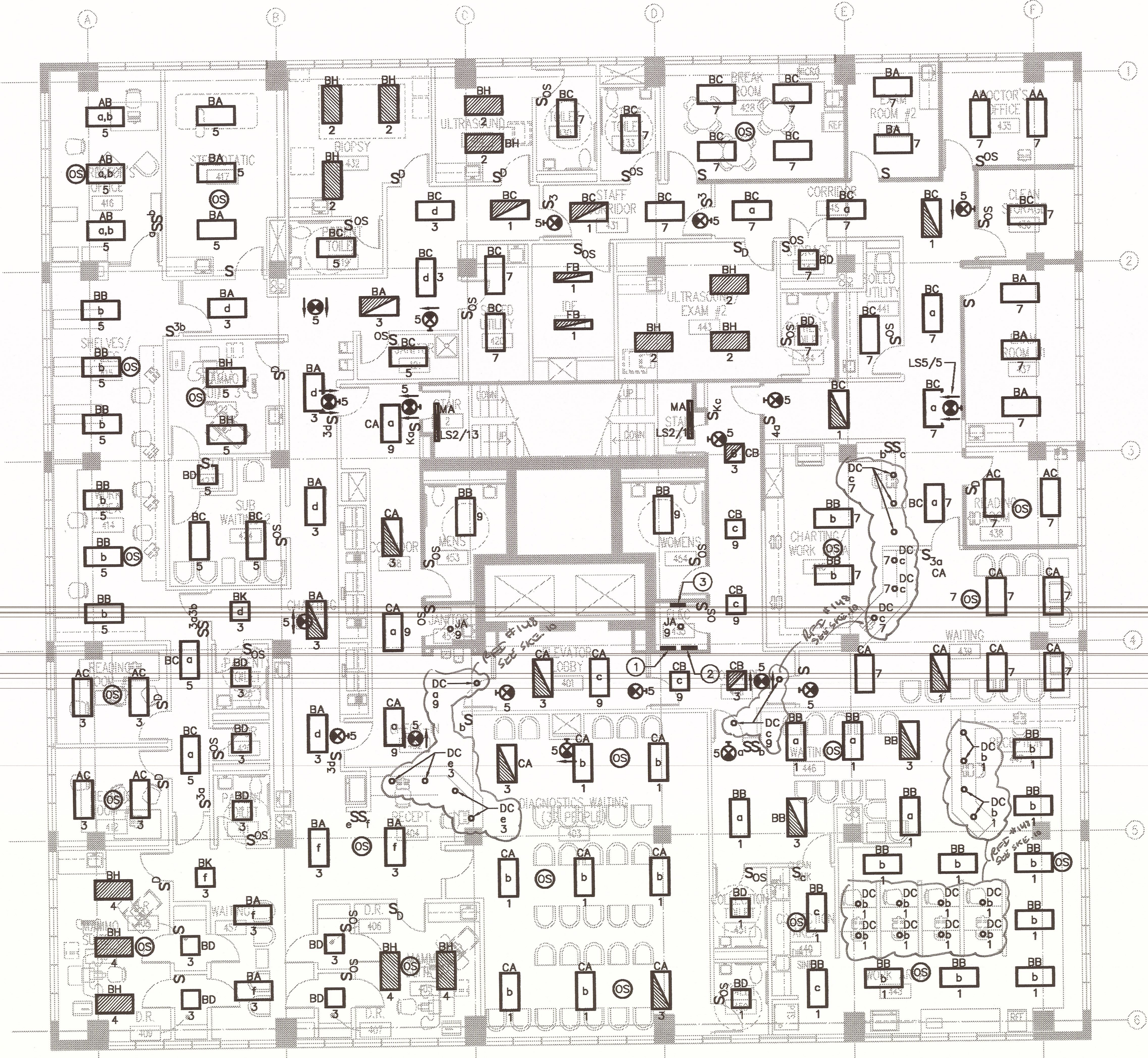


GENERAL NOTES:
 1. PROVIDE SEPARATE NEUTRAL FOR ALL DIMMING CIRCUITS.
 2. PROVIDE SEPARATE NEUTRAL FOR ALL DIMMING CIRCUITS.
 3. PROVIDE SEPARATE NEUTRAL FOR ALL DIMMING CIRCUITS.

SHEET KEY NOTES:
 1. PROVIDE SEPARATE NEUTRAL FOR ALL DIMMING CIRCUITS.
 2. PROVIDE SEPARATE NEUTRAL FOR ALL DIMMING CIRCUITS.
 3. PROVIDE SEPARATE NEUTRAL FOR ALL DIMMING CIRCUITS.

SCALE: 1/8" = 1'-0"
 PROJECT: TEMPORARY UNIVERSITY HOSPITAL & LEVEL I TRAUMA CENTER
 DATE: 11/14/08
 DRAWN BY: WEC
 SHEET NO.: E204
 CHECKED BY: JMB
 PACKAGE: 1 - BALLASTS, E204
 DRAWN BY: WEC
 SHEET NO.: E204
 CHECKED BY: JMB
 PACKAGE: 1 - BALLASTS, E204

"For Reference Only"



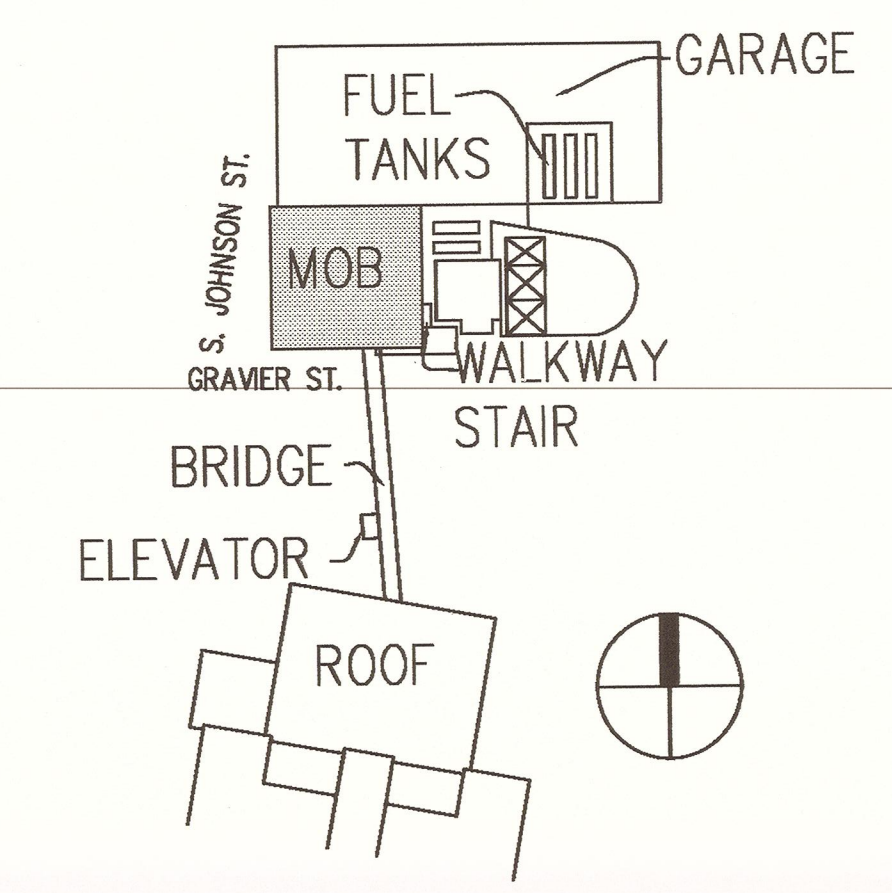
GENERAL NOTES

- A. LIGHT LINES INDICATE EXISTING TO REMAIN. HEAVY SOLID LINES INDICATE NEW WORK.
- B. FOR ELECTRICAL LEGENDS AND ABBREVIATIONS SEE DRAWING E000.
- C. FOR LIGHTING FIXTURE SCHEDULE SEE DRAWINGS E500 AND E501.
- D. FOR THIS DRAWING, NORMAL LIGHTING FIXTURES SHALL BE WIRED TO PANEL 'H4', UNO. FOR LOCATION OF PANEL 'H4' SEE DRAWING E304.
- E. FOR THIS DRAWING, EQUIPMENT BRANCH LIGHTING FIXTURES SHALL BE WIRED TO PANEL 'ES6', UNO. FOR LOCATION OF PANEL 'ES6' SEE DRAWING E306.
- F. FOR THIS DRAWING, LIFE SAFETY BRANCH LIGHTING FIXTURES AND EXIT SIGNS SHALL BE WIRED TO PANEL 'LSS', UNO. FOR LOCATION OF PANEL 'LSS' SEE DRAWING E305.
- G. MINIMUM CONDUCTOR SIZE FOR LIGHTING CIRCUITS SHALL BE #12 AWG. FOR 120V LIGHTING CIRCUITS WITH HOMERUN OVER 50 LINEAR FEET, MINIMUM WIRE SIZE SHALL BE #10 AWG.
- H. FOR LIGHT SWITCH MOUNTING HEIGHTS, SEE TYPICAL DEVICE MOUNTING DETAIL ON SHEET E502.
- I. PROVIDE SEPARATE NEUTRAL FOR ALL DIMMING CIRCUITS.

SPECIFIC NOTES

- 1. APPROXIMATE LOCATION OF EXISTING 480/277V PANEL 'H4'.
- 2. APPROXIMATE LOCATION OF EXISTING 208/120V PANEL 'L4'.
- 3. EXISTING PANEL 'L4B'

KEYPLAN



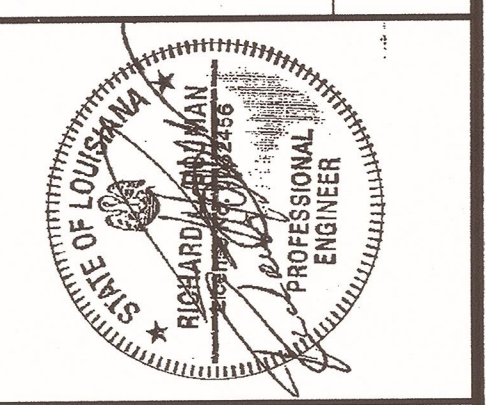
PACKAGE

F

UMOB, ELEV.
 TOWER, GARAGE
 DEMO, IH LAB /
 UMOB ROOFS
 +
 FUEL TANKS

E1 FLOOR 4 LIGHTING PLAN
 1/8" = 1'-0"

Blitchknevel
 ARCHITECTS
 NEW ORLEANS, LOUISIANA 70130
 757 ST. CHARLES AVENUE
 (504) 524-4634
 FAX (504) 524-5128



URS
 architects • engineers • planners

INTERIM UNIVERSITY HOSPITAL & LEVEL I TRAUMA CENTER
 PROJECT NUMBER: 01-107-05B-13, Part 0B
 SITE ID: 1-36-669 STATE ID NO.: 08923
LSU University Hospital
 HEALTH CARE SERVICE DIVISION
 Medical Center of Louisiana at New Orleans

MARK	DATE	DESCRIPTION

DRAWING ISSUED: 2/11/08

PROJECT NO: 0580-F
 DRAWING TITLE:
**FLOOR 4
 LIGHTING
 PLAN**

DRAWING NUMBER:
E204
 SHEET 177 OF 234

"For Reference Only"



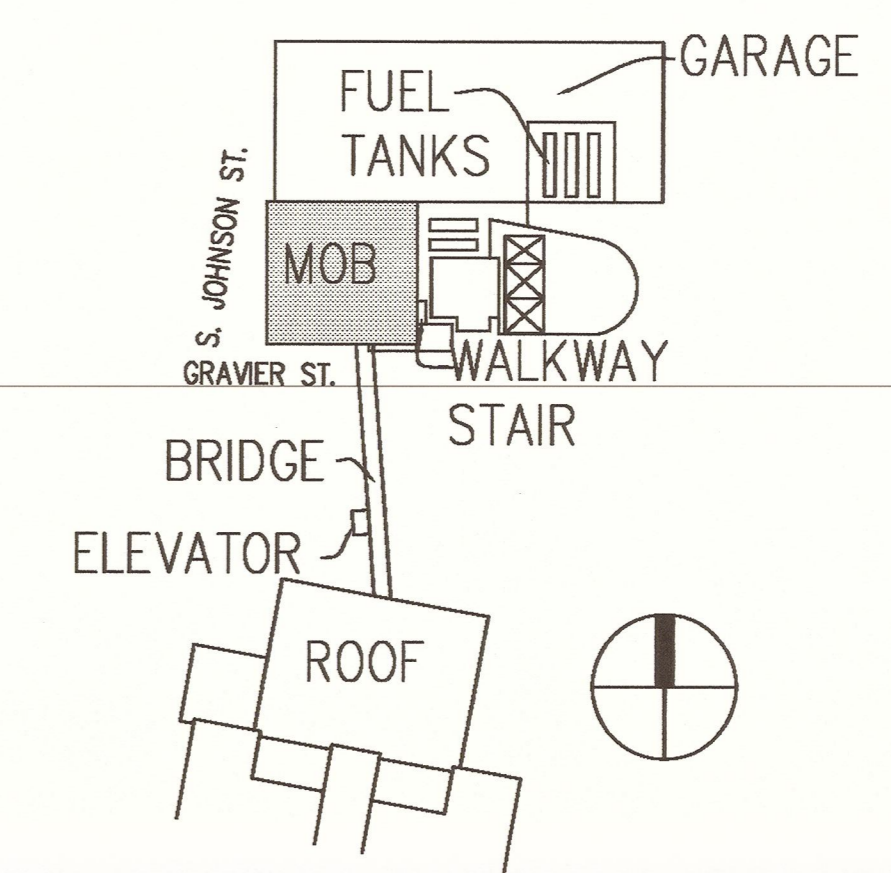
GENERAL NOTES

- A. LIGHT LINES INDICATE EXISTING TO REMAIN. HEAVY SOLID LINES INDICATE NEW WORK.
- B. FOR ELECTRICAL LEGENDS AND ABBREVIATIONS SEE DRAWING E000.
- C. FOR LIGHTING FIXTURE SCHEDULE SEE DRAWINGS E500 AND E501.
- D. FOR THIS DRAWING, NORMAL LIGHTING FIXTURES SHALL BE WIRED TO PANEL 'H5', UNO. FOR LOCATION OF PANEL 'H5' SEE DRAWING E305.
- E. FOR THIS DRAWING, EQUIPMENT BRANCH LIGHTING FIXTURES SHALL BE WIRED TO PANEL 'ES6', UNO. FOR LOCATION OF PANEL 'ES6' SEE DRAWING E306.
- F. FOR THIS DRAWING, LIFE SAFETY BRANCH LIGHTING FIXTURES AND EXIT SIGNS SHALL BE WIRED TO PANEL 'LSS', UNO. FOR LOCATION OF PANEL 'LSS' SEE DRAWING E305.
- G. MINIMUM CONDUCTOR SIZE FOR LIGHTING CIRCUITS SHALL BE #12 AWG. FOR 120V LIGHTING CIRCUITS WITH HOMERUN OVER 50 LINEAR FEET, MINIMUM WIRE SIZE SHALL BE #10 AWG.
- H. FOR LIGHT SWITCH MOUNTING HEIGHTS, SEE TYPICAL DEVICE MOUNTING DETAIL ON SHEET E502.
- I. PROVIDE SEPERATE NEUTRAL FOR ALL DIMMING CIRCUITS.

SPECIFIC NOTES

- 1. FIXTURE REQUIRES NORMAL AND EMERGENCY POWER SOURCES. FOR EMERGENCY LIGHTING CONTROL WIRING DIAGRAM SEE DETAIL ON SHEET E502.
- 2. APPROXIMATE LOCATION OF EXISTING 480/277V PANEL 'H5'.
- 3. APPROXIMATE LOCATION OF EXISTING 208/120V PANEL 'L5'.
- 4. 15KVA TRANSFORMER FOR PANEL 'LSS' MOUNTED ON WALL ABOVE PANELS.

KEYPLAN



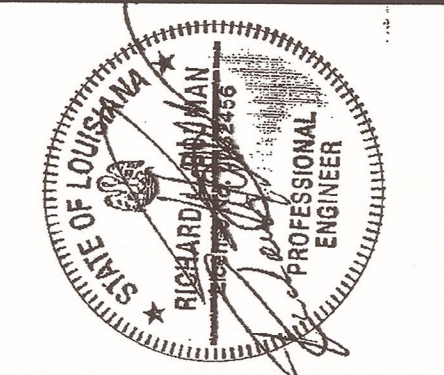
PACKAGE

F

UMOB, ELEV. TOWER, GARAGE DEMO, IH LAB / UMOB ROOFS + FUEL TANKS

E1 FLOOR 5 LIGHTING PLAN
1/8" = 1'-0"

BltchKnevel
ARCHITECTS
757 ST. CHARLES AVENUE
NEW ORLEANS, LOUISIANA, 70130
(504) 524-4834
FAX (504) 524-5128



JRS
architects • engineers • planners

CONSULTANTS:

INTERIM UNIVERSITY HOSPITAL & LEVEL I TRAUMA CENTER
PROJECT NUMBER 01-107-05B-13, Part GB
SITE ID: 1-35-069 STATE ID NO.: 08923

LSU University Hospital
HEALTH CARE SERVICE DIVISION
Medical Center of Louisiana at New Orleans

MARK DATE DESCRIPTION
DRAWING ISSUED: 2/11/08

PROJECT NO: 0580-F

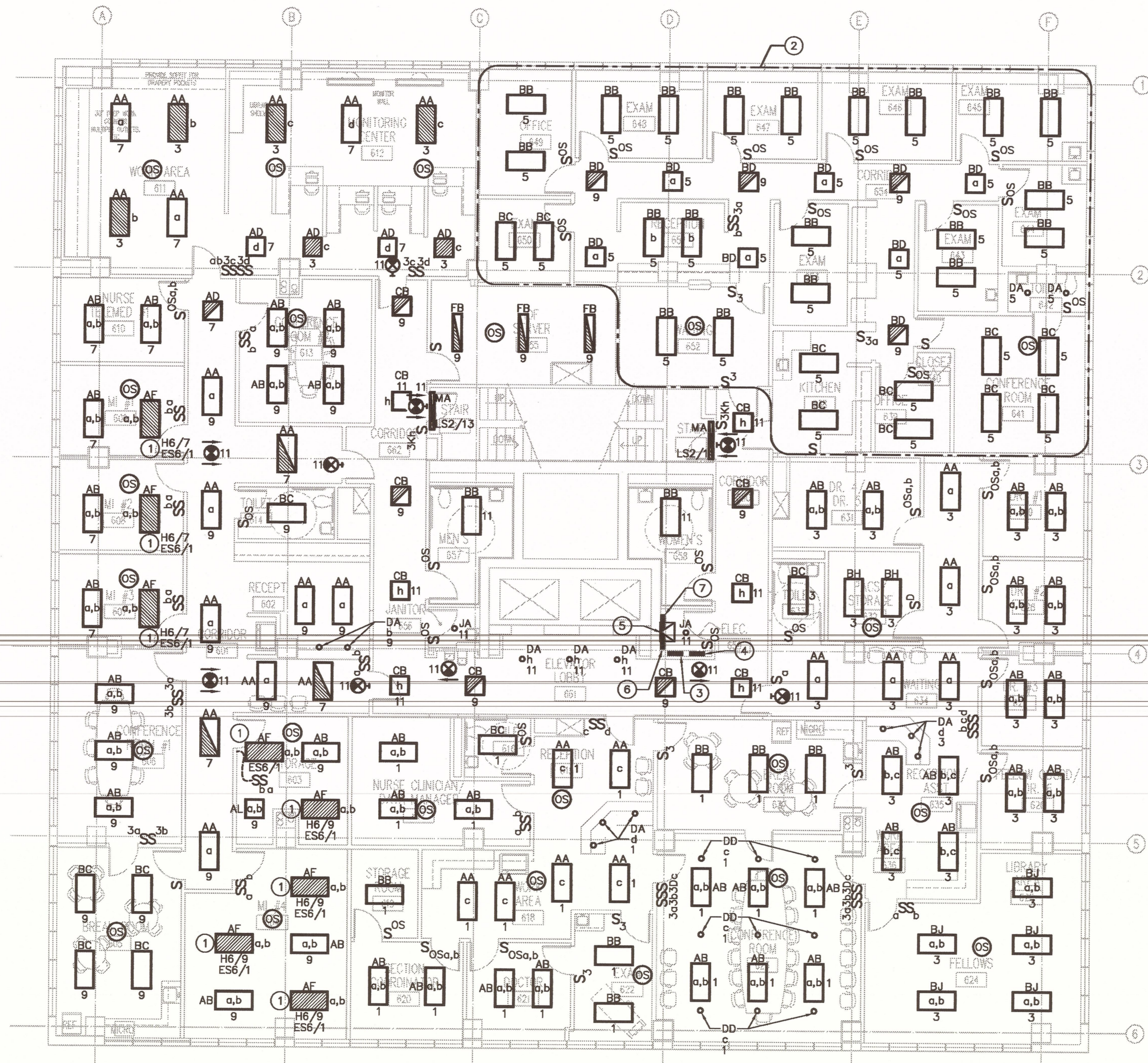
DRAWING TITLE:
FLOOR 5
LIGHTING
PLAN

DRAWING NUMBER:

E205

SHEET 178 OF 234

"For Reference Only"



GENERAL NOTES

- A. LIGHT LINES INDICATE EXISTING TO REMAIN, HEAVY SOLID LINES INDICATE NEW WORK.
- B. FOR ELECTRICAL LEGENDS AND ABBREVIATIONS SEE DRAWING E000.
- C. FOR LIGHTING FIXTURE SCHEDULE SEE DRAWINGS E500 AND E501.
- D. FOR THIS DRAWING, NORMAL LIGHTING FIXTURES SHALL BE WIRED TO PANEL 'H6', UNO. FOR LOCATION OF PANEL 'H6' SEE DRAWING E306.
- E. FOR THIS DRAWING, EQUIPMENT BRANCH LIGHTING FIXTURES SHALL BE WIRED TO PANEL 'ES6', UNO. FOR LOCATION OF PANEL 'ES6' SEE DRAWING E306.
- F. FOR THIS DRAWING, LIFE SAFETY BRANCH LIGHTING FIXTURES AND EXIT SIGNS SHALL BE WIRED TO PANEL 'LSS', UNO. FOR LOCATION OF PANEL 'LSS' SEE DRAWING E305.
- G. MINIMUM CONDUCTOR SIZE FOR LIGHTING CIRCUITS SHALL BE #12 AWG. FOR 120V LIGHTING CIRCUITS WITH HOMERUN OVER 50 LINEAR FEET, MINIMUM WIRE SIZE SHALL BE #10 AWG.
- H. FOR LIGHT SWITCH MOUNTING HEIGHTS, SEE TYPICAL DEVICE MOUNTING DETAIL ON SHEET E502.
- I. PROVIDE SEPERATE NEUTRAL FOR ALL DIMMING CIRCUITS.

BltchKnevel
ARCHITECTS

NEW ORLEANS, LOUISIANA 70130
757 ST. CHARLES AVENUE
(504) 524-4634 FAX (504) 524-5128



URS
architects • engineers • planners

CONSULTANTS:

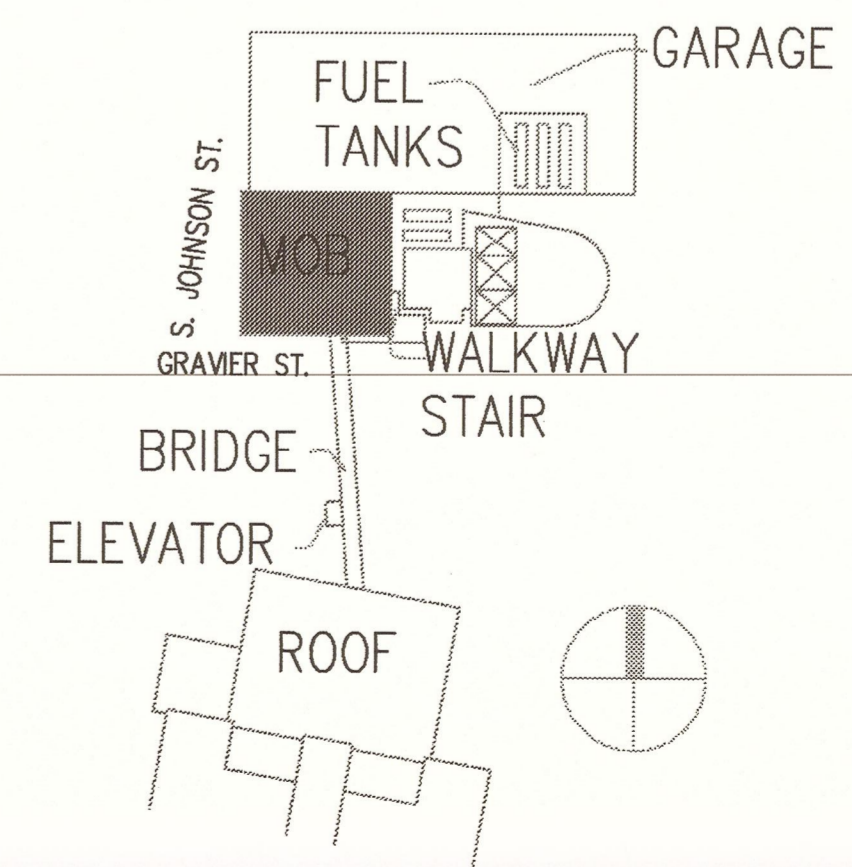
INTERIM UNIVERSITY HOSPITAL & LEVEL I TRAUMA CENTER
PROJECT NUMBER: 01-107-08B-13, Part CB
SITE ID: 1-39-089 STATE ID NO.: 09923

LSU University Hospital
HEALTH CARE SERVICE DIVISION
Medical Center of Louisiana at New Orleans

SPECIFIC NOTES

- ① FIXTURE REQUIRES NORMAL AND EMERGENCY POWER SOURCES. FOR EMERGENCY LIGHTING CONTROL WIRING DIAGRAM SEE DETAIL ON SHEET E502.
- ② IN THIS AREA, PROVIDE NEW LIGHTING SWITCHES (OF TYPE AS SHOWN ON PLAN) AND COVER PLATES IN EXISTING OUTLET BOXES.
- ③ APPROXIMATE LOCATION OF EXISTING 480/277V PANEL 'H6'.
- ④ APPROXIMATE LOCATION OF EXISTING 208/120V PANEL 'L6'.
- ⑤ 45kVA TRANSFORMER FOR PANEL 'ESL6' MOUNTED ON WALL ABOVE PANELS.
- ⑥ PANEL ES6
- ⑦ PANEL ESL6

KEYPLAN



PACKAGE

F

UMOB, ELEV. TOWER, GARAGE DEMO, IH LAB / UMOB ROOFS + FUEL TANKS

E1 FLOOR 6 LIGHTING PLAN
1/8" = 1'-0"

MARK DATE DESCRIPTION

DRAWING ISSUED: 2/11/08

PROJECT NO: 0580-F

DRAWING TITLE:

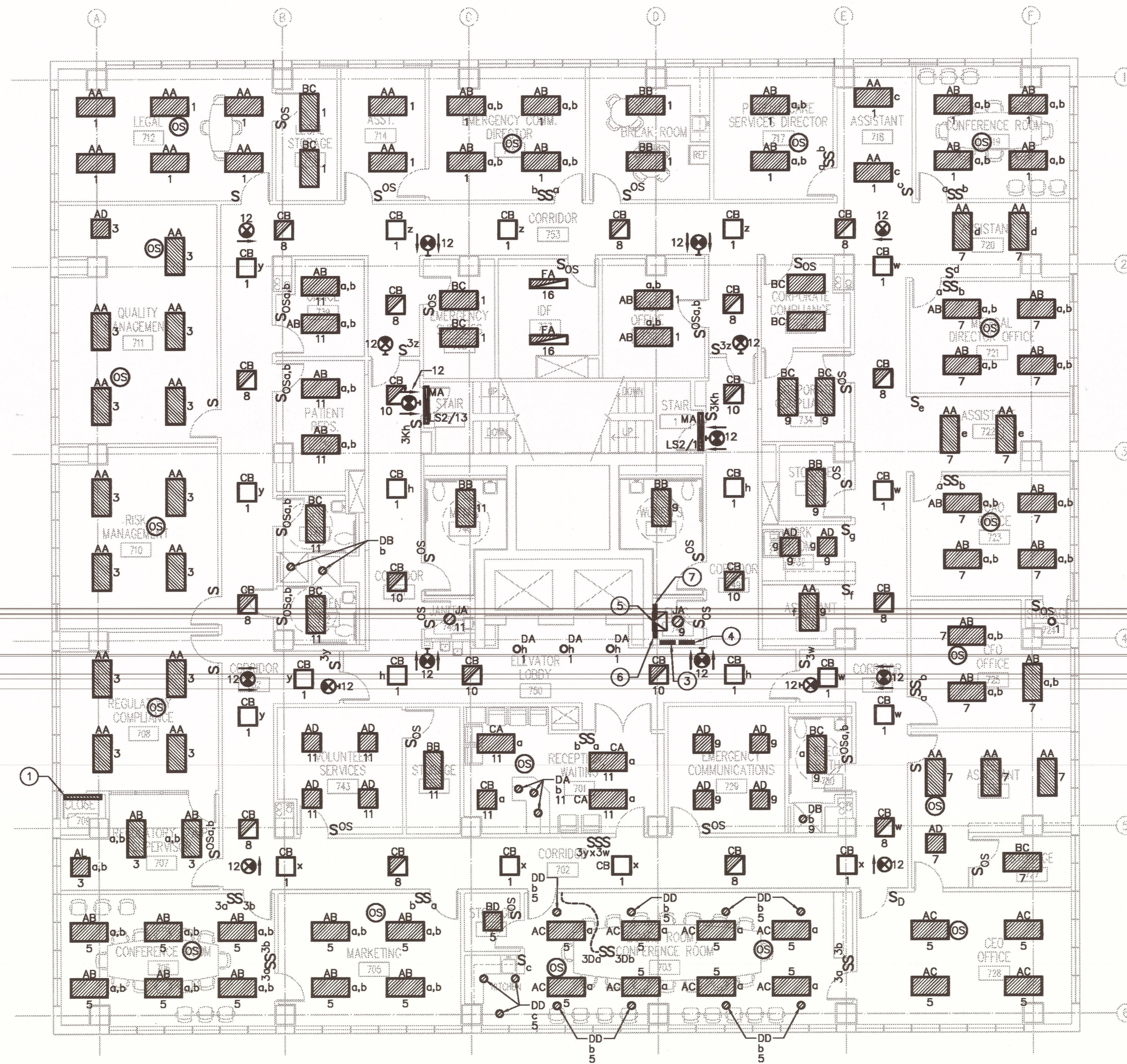
FLOOR 6 LIGHTING PLAN

DRAWING NUMBER:

E206

SHEET 179 OF 234

"For Reference Only"



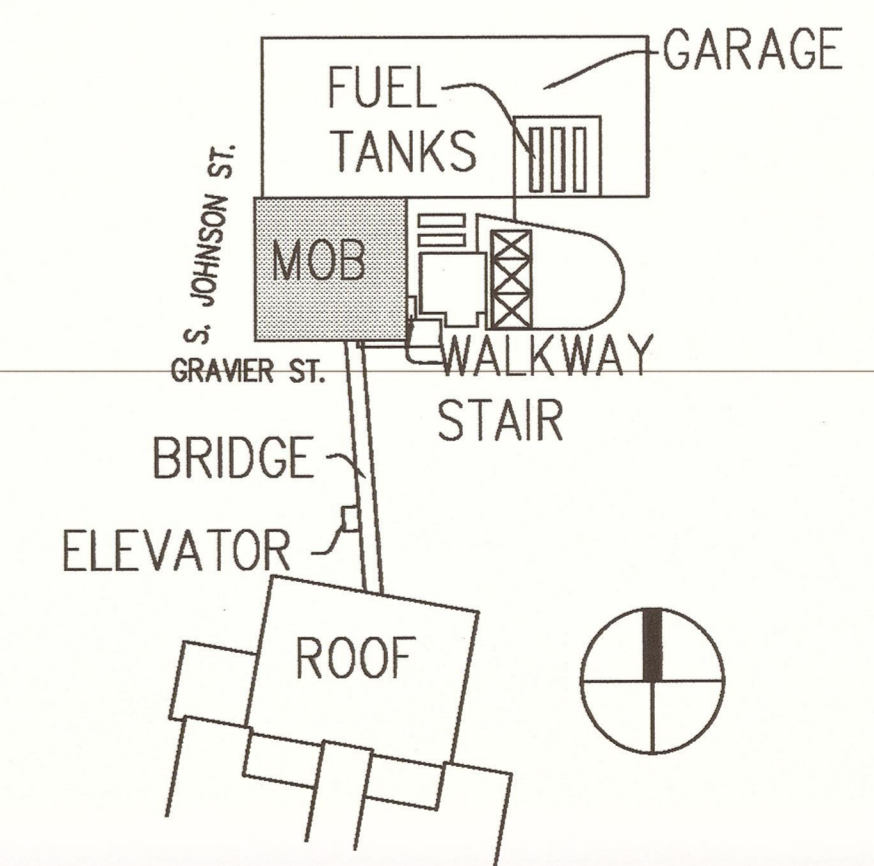
GENERAL NOTES

- A. LIGHT LINES INDICATE EXISTING TO REMAIN. HEAVY SOLID LINES INDICATE NEW WORK.
- B. FOR ELECTRICAL LEGENDS AND ABBREVIATIONS SEE DRAWING E000.
- C. FOR LIGHTING FIXTURE SCHEDULE SEE DRAWINGS E500 AND E501.
- D. FOR THIS DRAWING, NORMAL LIGHTING FIXTURES SHALL BE WIRED TO PANEL 'H7', UNO. FOR LOCATION OF PANEL 'H7' SEE DRAWING E307.
- E. FOR THIS DRAWING, EQUIPMENT BRANCH LIGHTING FIXTURES SHALL BE WIRED TO PANEL 'ES7', UNO. FOR LOCATION OF PANEL 'ES7' SEE DRAWING E307.
- F. FOR THIS DRAWING, LIFE SAFETY BRANCH LIGHTING FIXTURES AND EXIT SIGNS SHALL BE WIRED TO PANEL 'LS5', UNO. FOR LOCATION OF PANEL 'LS5' SEE DRAWING E305.
- G. MINIMUM CONDUCTOR SIZE FOR LIGHTING CIRCUITS SHALL BE #12 AWG. FOR 120V LIGHTING CIRCUITS WITH HOMERUN OVER 50 LINEAR FEET, MINIMUM WIRE SIZE SHALL BE #10 AWG.
- H. FOR LIGHT SWITCH MOUNTING HEIGHTS, SEE TYPICAL DEVICE MOUNTING DETAIL ON SHEET E502.
- I. PROVIDE SEPARATE NEUTRAL FOR ALL DIMMING CIRCUITS.

SPECIFIC NOTES

- 1. PROVIDE TYPE "KA" LIGHTING FIXTURE (SEE FIXTURE SCHEDULE) WALL MOUNTED ABOVE DOOR IN CLOSET ROOM 709. PROVIDE LOCAL SWITCH WITH OCCUPANCY SENSOR AND CIRCUIT TO 'ES7/3'.
- 2. NOT USED
- 3. APPROXIMATE LOCATION OF EXISTING 480/277V PANEL 'H7'.
- 4. APPROXIMATE LOCATION OF EXISTING 208/120V PANEL 'L7'.
- 5. 30KVA TRANSFORMER FOR PANEL 'ESL7' MOUNTED ON WALL ABOVE PANELS.
- 6. PANEL ES7
- 7. PANEL ESL7

KEYPLAN



PACKAGE

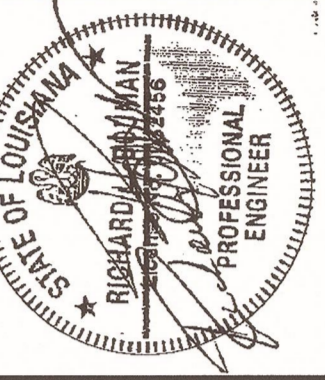
F

UMOB, ELEV.
TOWER, GARAGE
DEMO, IH LAB /
UMOB ROOFS
+
FUEL TANKS

E1 FLOOR 7 LIGHTING PLAN
1/8" = 1'-0"

BltchKnevel
ARCHITECTS

NEW ORLEANS, LOUISIANA 70130
757 ST. CHARLES AVENUE
(504) 524-4634 FAX (504) 524-5128



JRS
architects • engineers • planners

CONSULTANTS:

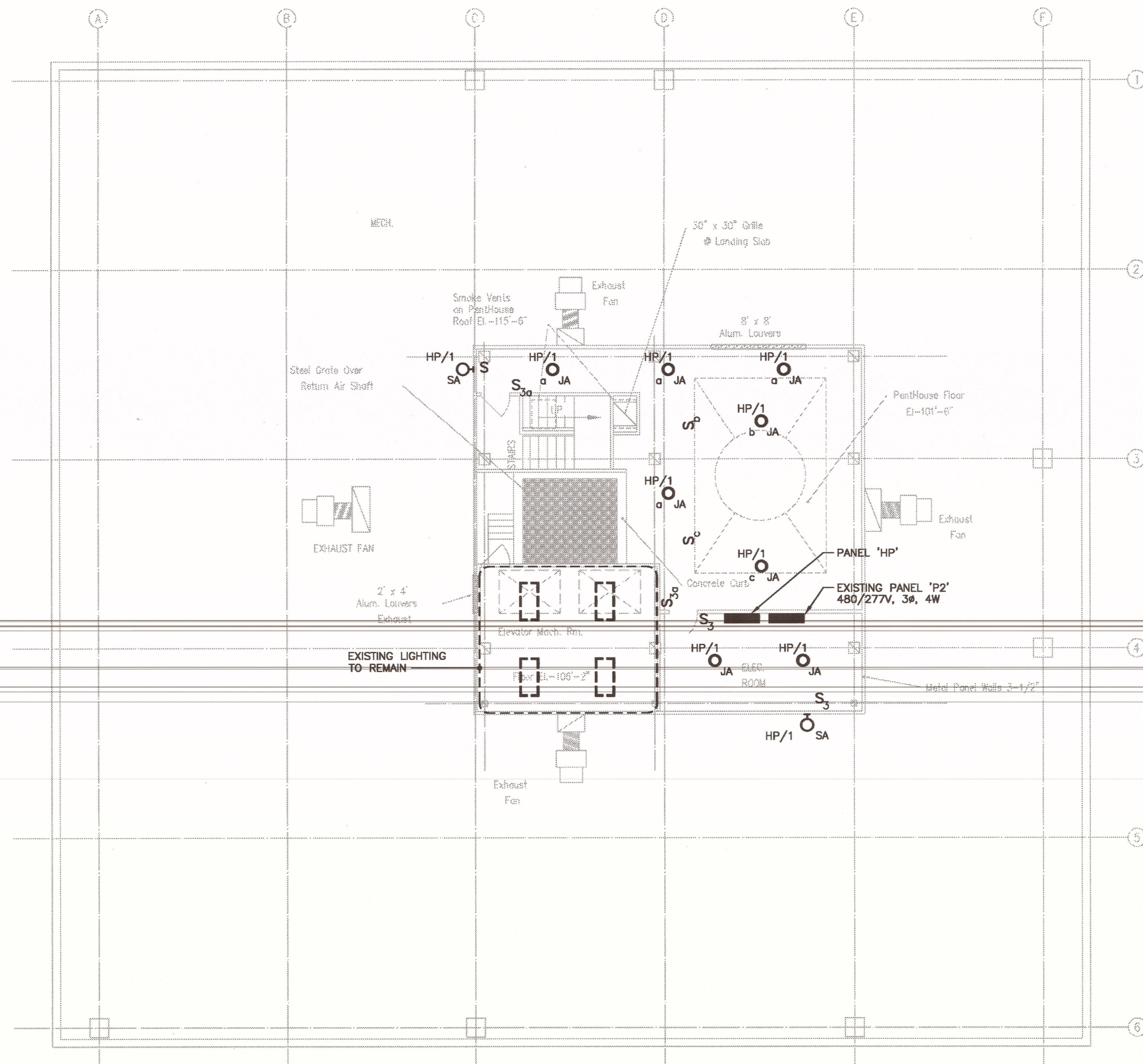
INTERIM UNIVERSITY HOSPITAL & LEVEL I TRAUMA CENTER
PROJECT NUMBER: 01-107-08B-13, Part GB
SITE ID: 1-36-089 STATE ID NO.: 09923

LSU University Hospital
HEALTH CARE SERVICE DIVISION
Medical Center of Louisiana at New Orleans

MARK	DATE	DESCRIPTION
	2/11/08	DRAWING ISSUED:
		PROJECT NO: 0580-F
		DRAWING TITLE: FLOOR 7 LIGHTING PLAN
		DRAWING NUMBER:

E207
SHEET 180 OF 234

"For Reference Only"



GENERAL NOTES

- A. LIGHT LINES INDICATE EXISTING TO REMAIN. HEAVY SOLID LINES INDICATE NEW WORK.
- B. FOR ELECTRICAL LEGENDS AND ABBREVIATIONS SEE DRAWING E000.
- C. FOR LIGHTING FIXTURE SCHEDULE SEE DRAWINGS E500 AND E501.
- D. FOR THIS DRAWING, NORMAL LIGHTING FIXTURES SHALL BE WIRED TO PANEL 'H7', UNO. FOR LOCATION OF PANEL 'H7' SEE DRAWING E307.
- E. FOR THIS DRAWING, EQUIPMENT BRANCH LIGHTING FIXTURES SHALL BE WIRED TO PANEL 'ES7', UNO. FOR LOCATION OF PANEL 'ES7' SEE DRAWING E307.
- F. FOR THIS DRAWING, LIFE SAFETY BRANCH LIGHTING FIXTURES AND EXIT SIGNS SHALL BE WIRED TO PANEL 'LS6', UNO. FOR LOCATION OF PANEL 'LS6' SEE DRAWING E306.
- G. MINIMUM CONDUCTOR SIZE FOR LIGHTING CIRCUITS SHALL BE #12 AWG. FOR 120V LIGHTING CIRCUITS WITH HOMERUN OVER 50 LINEAR FEET, MINIMUM WIRE SIZE SHALL BE #10 AWG.
- H. FOR LIGHT SWITCH MOUNTING HEIGHTS, SEE TYPICAL DEVICE MOUNTING DETAIL ON SHEET E502.
- I. PROVIDE SEPARATE NEUTRAL FOR ALL DIMMING CIRCUITS.

Blitchknevel
ARCHITECTS

757 ST. CHARLES AVENUE
NEW ORLEANS, LOUISIANA 70130
(504) 524-4634 FAX (504) 524-5128



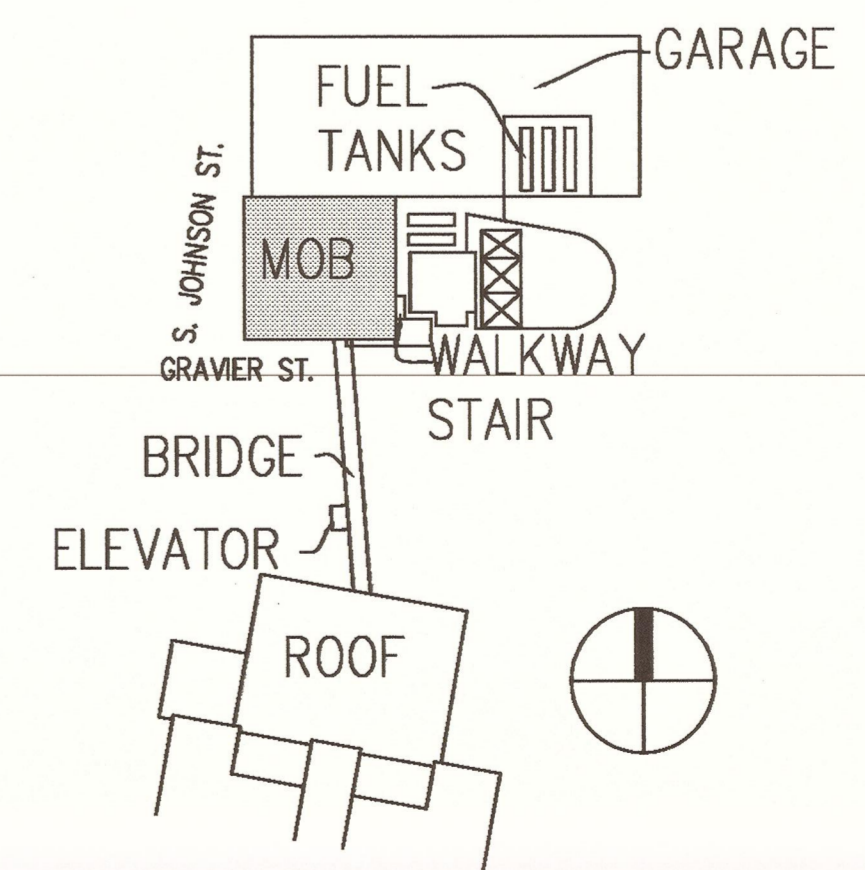
URS
architects • engineers • planners

CONSULTANTS:

SPECIFIC NOTES

- ① NOT USED.

KEYPLAN



PACKAGE

F

UMOB, ELEV.
TOWER, GARAGE
DEMO, IH LAB /
UMOB ROOFS
+
FUEL TANKS

E1 ROOF LIGHTING PLAN
1/8" = 1'-0"

INTERIM UNIVERSITY HOSPITAL & LEVEL I TRAUMA CENTER
PROJECT NUMBER 01-107-08B-13, Part GB
SITE ID: 1-36-069 STATE ID NO.: 09923

LSU University Hospital
HEALTH CARE SERVICE DIVISION
Medical Center of Louisiana at New Orleans

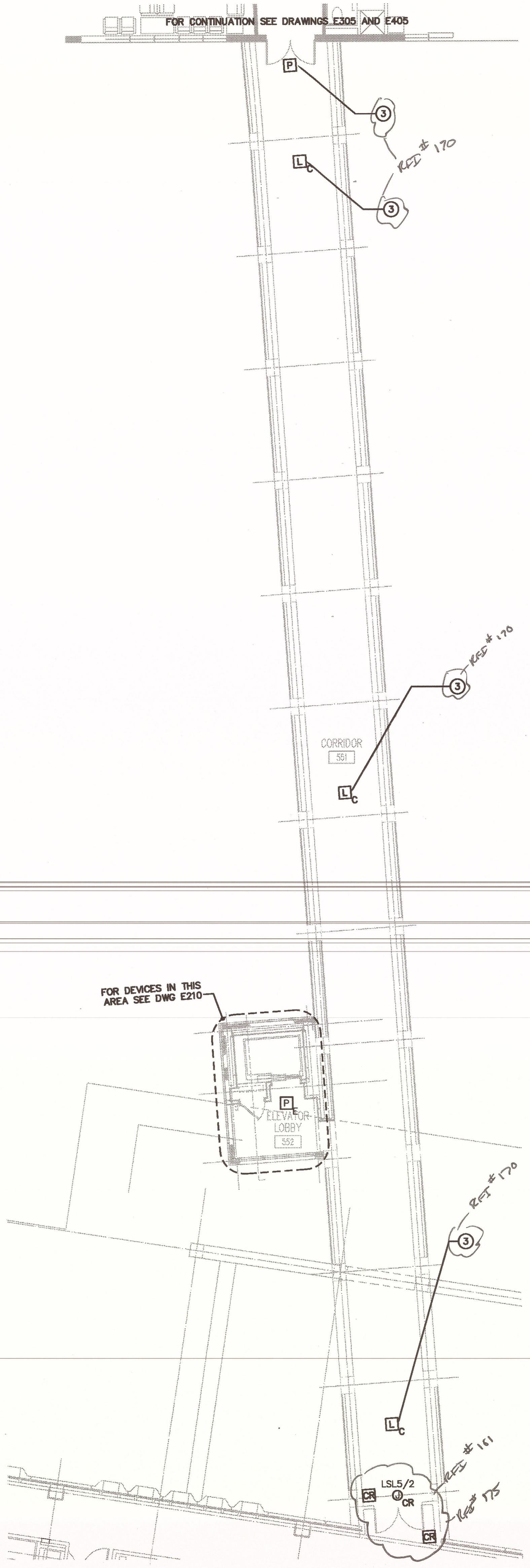
MARK	DATE	DESCRIPTION

DRAWING ISSUED: 2/11/08

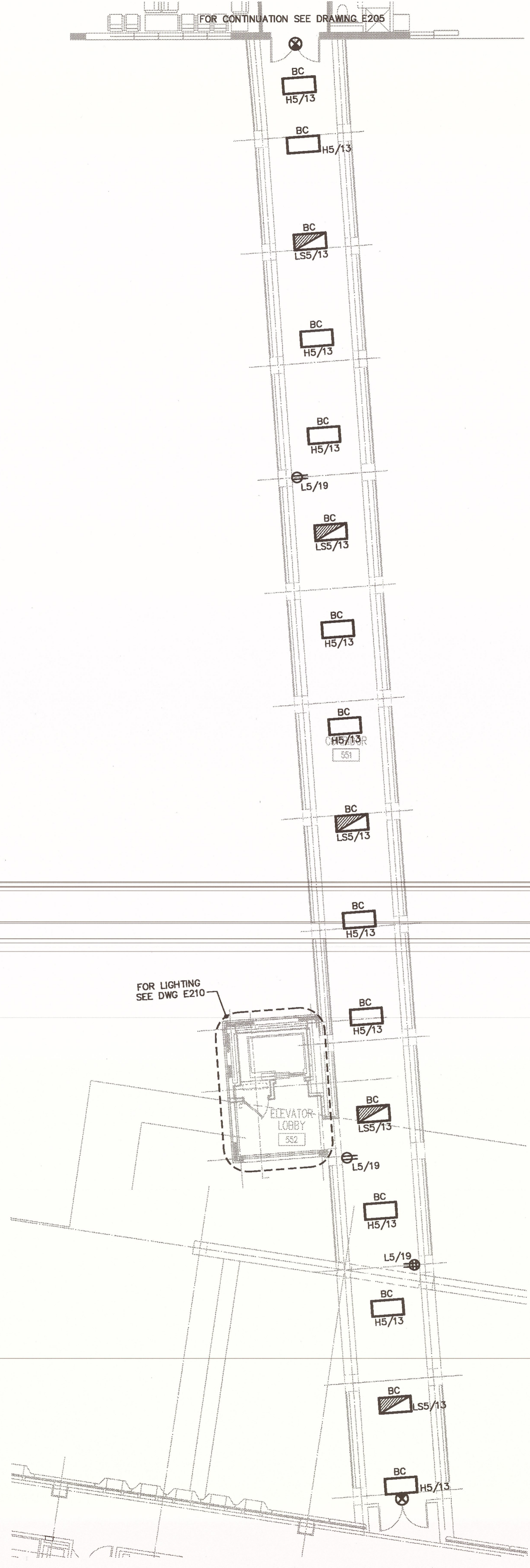
PROJECT NO: 0580-F
DRAWING TITLE:
ROOF LIGHTING PLAN

DRAWING NUMBER:

E208

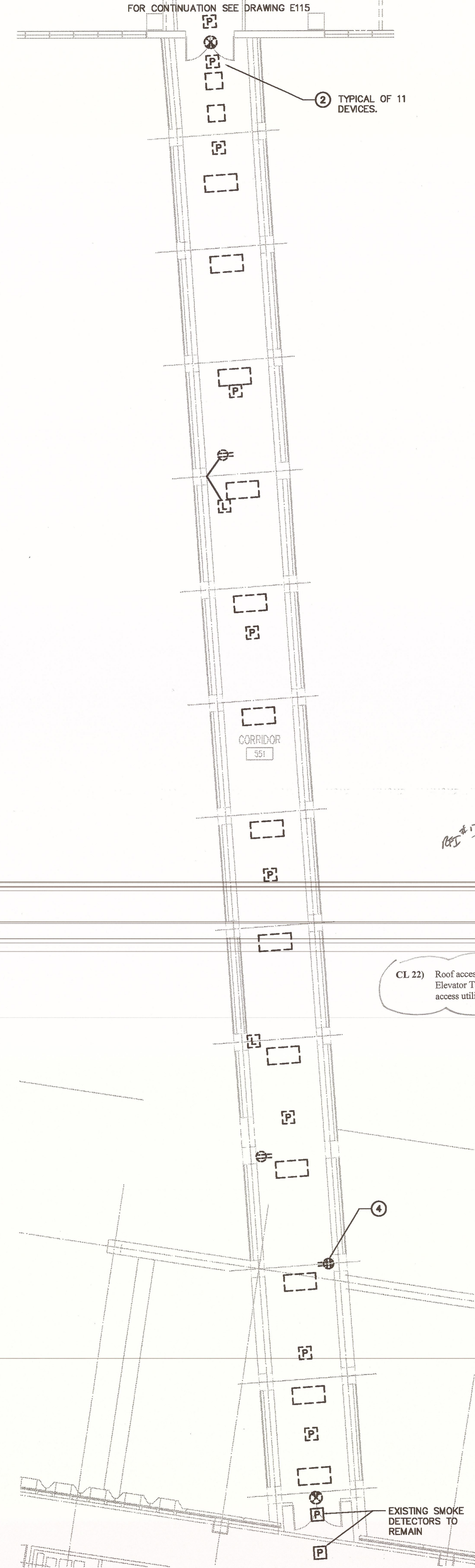


E3 BRIDGE ELECTRICAL POWER & SYSTEMS PLAN
1/8" = 1'-0"



E2 BRIDGE ELECTRICAL LIGHTING PLAN
1/8" = 1'-0"

"For Reference Only"



E1 BRIDGE ELECTRICAL DEMO PLAN
1/8" = 1'-0"

GENERAL NOTES

- A. LIGHT LINES INDICATE EXISTING TO REMAIN. HEAVY SOLID LINES INDICATE NEW WORK.
- B. FOR ELECTRICAL LEGENDS AND ABBREVIATIONS SEE DRAWING E000.
- C. FOR LIGHTING FIXTURE SCHEDULE SEE DRAWINGS E500 AND E501.
- D. FOR THIS DRAWING, NORMAL LIGHTING FIXTURES SHALL BE WIRED TO PANEL 'H5', UNO. FOR LOCATION OF PANEL 'H5' SEE DRAWING E305.
- E. FOR THIS DRAWING, LIFE SAFETY BRANCH LIGHTING FIXTURES AND EXIT SIGNS SHALL BE WIRED TO PANEL 'LS5', UNO. FOR LOCATION OF PANEL 'LS5' SEE DRAWING E305.
- F. MINIMUM CONDUCTOR SIZE FOR LIGHTING CIRCUITS SHALL BE #12 AWG. FOR 120V LIGHTING CIRCUITS WITH HOMERUN OVER 50 LINEAR FEET, MINIMUM WIRE SIZE SHALL BE #10 AWG.
- G. FOR LIGHT SWITCH MOUNTING HEIGHTS, SEE TYPICAL DEVICE MOUNTING DETAIL ON SHEET E502.
- H. FOR ELECTRICAL ONE-LINE DIAGRAM SEE DRAWING E600 AND E601.
- I. FOR FEEDER, TRANSFORMER AND PANELBOARD MAKE-UP SCHEDULES SEE DRAWING E602.
- J. MINIMUM CONDUCTOR SIZE FOR POWER BRANCH CIRCUITS SHALL BE #12 AWG. FOR POWER BRANCH CIRCUITS OVER 50 LINEAR FEET, MINIMUM WIRE SIZE SHALL BE #10 AWG.
- K. GENERAL PURPOSE RECEPTACLE CIRCUITS ON SEPARATE PHASES SHALL BE PERMITTED TO SHARE A NEUTRAL CONDUCTOR; HOWEVER, THIS NEUTRAL CONDUCTOR SHALL BE #10 AWG FOR #12 AWG PHASE CONDUCTORS.
- L. ELECTRICAL CONTRACTOR TO PROVIDE WIRING BETWEEN CONTROL PANELS AND MOTORS. CONTROL PANELS AND MOTORS PROVIDED BY DIVISION 15.
- M. ELECTRICAL CONTRACTOR TO PROVIDE WIRING BETWEEN VFD'S AND MOTORS. VFD'S AND MOTORS PROVIDED BY DIVISION 15.
- N. FOR FIRE ALARM LEGEND SEE DRAWING E000.
- O. FOR FIRE ALARM RISER AND DETAILS SEE DRAWING E503.

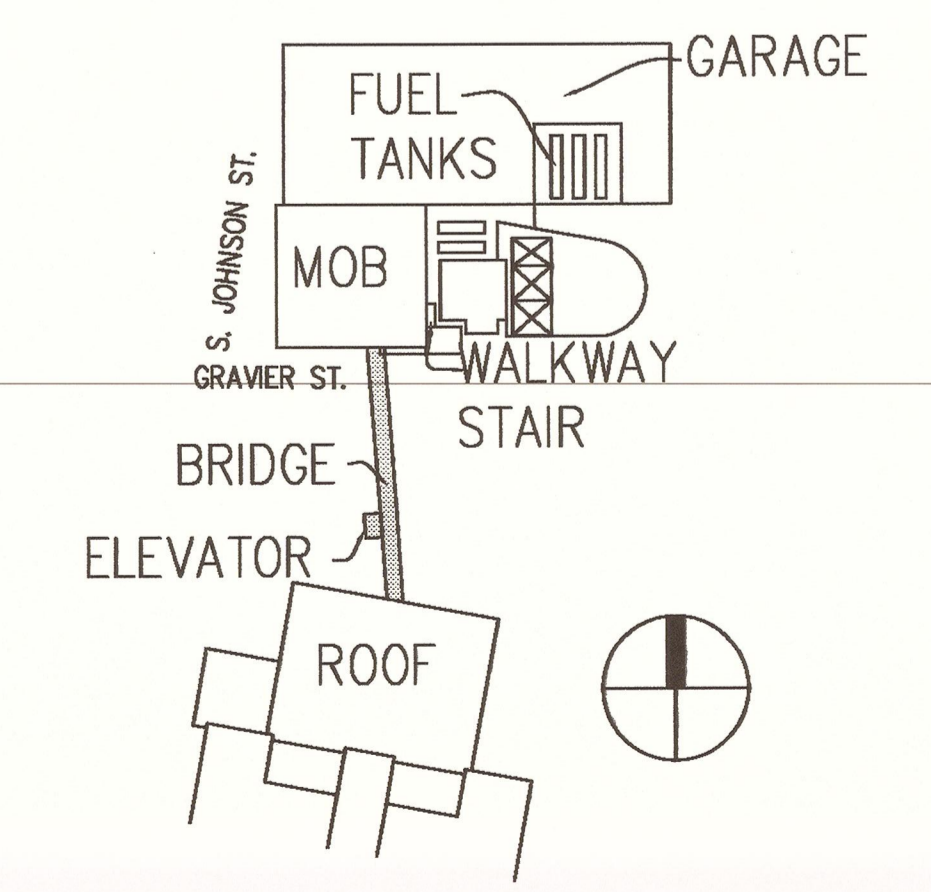
SPECIFIC NOTES

- 1 TYPE 'BC' FIXTURE WITH FLANGE KIT FOR MOUNTING RECESSED IN DRYWALL CEILING.
- 2 REMOVE EXISTING FIRE ALARM DEVICES CONNECTED TO HOSPITAL FIRE ALARM SYSTEM. REPROGRAM EXISTING FIRE ALARM CONTROL PANEL AS REQUIRED.
- 3 CONNECT NEW FIRE ALARM DEVICES TO MOB FIRE ALARM CONTROL PANEL.
- 4 REPLACE RECEPTACLES AND COVER PLATES. DISCONNECT AND REMOVE CIRCUITS TO EXIST PANEL AND RECONNECT TO PANEL AND BRANCH CIRCUIT SHOWN ON LIGHTING PLAN THIS DRAWING.

ADDENDUM #3

CL 22) Roof access to the 4th Floor Lab roof shall be via the front (north) side of the 1st Floor roof, adjacent to the Elevator Tower. No staging will be allowed in the loading dock drive. The 1st Floor roof or any other means of access utilizing existing building components shall be protected to avoid damage.

KEYPLAN

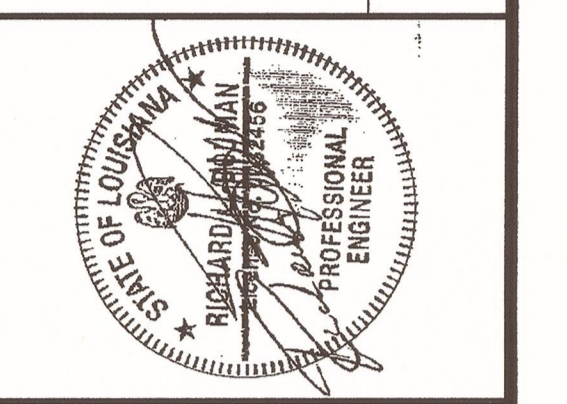


PACKAGE

F

UMOB, ELEV. TOWER, GARAGE DEMO, IH LAB / UMOB ROOFS + FUEL TANKS

Britchknevel ARCHITECTS
NEW ORLEANS, LOUISIANA 70130
757 ST. CHARLES AVENUE
(504) 524-4634 FAX (504) 524-5729



URS
architects • engineers • planners

LSU University Hospital
HEALTH CARE SERVICE DIVISION
Medical Center of Louisiana at New Orleans

INTERIM UNIVERSITY HOSPITAL & LEVEL I TRAUMA CENTER
PROJECT NUMBER: 01-107-08B-13, Part GB
SITE ID: 1-36-089 STATE ID NO: 09923

MARK	DATE	DESCRIPTION
	2/17/08	DRAWING ISSUED
		PROJECT NO: 0580-F
		DRAWING TITLE: BRIDGE ELECTRICAL DEMO, LIGHTING, POWER & SYSTEMS PLANS
		DRAWING NUMBER: E209
		SHEET 182 OF 234

LIGHTING FIXTURE SCHEDULE

TYPE	LAMPS	120V	277V	DISCRPTION	MANUFACTURER	CATALOG SERIES	REMARKS
AA	3-F32 T-8 3500K			2' x 4' STATIC RECESSED FLUOR W/ 18 CELL 3" DEEP 0.025 GA PARABOLIC SHAPED LOW IRRIDESCENT SEMI-SPECULAR AL LOUVER IN HINGED FLOATING DOOR AND BLACK PERIMETER REVEAL, AND ELECTRONIC BALLAST. PAINT AFTER FABRICATION. MINIMUM OVERALL DEPTH SHALL BE 5.25".	LITHONIA METALUX COLUMBIA	PARAMAX PARALUX P4	
AB	3-F32 T-8 3500K			2' x 4' STATIC RECESSED FLUOR W/ 18 CELL 3" DEEP 0.025 GA PARABOLIC SHAPED LOW IRRIDESCENT SEMI-SPECULAR AL LOUVER IN HINGED FLOATING DOOR AND BLACK PERIMETER REVEAL, AND (2) ELECTRONIC BALLASTS. PAINT AFTER FABRICATION. MINIMUM OVERALL DEPTH SHALL BE 5.25".	LITHONIA METALUX COLUMBIA	PARAMAX PARALUX P4	(2) BALLASTS FOR MULTI-LEVEL SWITCHING
AC	3-F32 T-8 3500K			2' x 4' STATIC RECESSED FLUOR W/ 18 CELL 3" DEEP 0.025 GA PARABOLIC SHAPED LOW IRRIDESCENT SEMI-SPECULAR AL LOUVER IN HINGED FLOATING DOOR AND BLACK PERIMETER REVEAL, AND DIMMABLE BALLAST. PAINT AFTER FABRICATION. MINIMUM OVERALL DEPTH SHALL BE 5.25".	LITHONIA METALUX COLUMBIA	PARAMAX PARALUX P4	DIMMABLE BALLAST TO BE LUTRON HI-LUME FDB OR A/E APPROVED EQUAL
AD	3-31W U1 1/2 TB 3500K			2' x 2' STATIC RECESSED FLUOR W/ 9 CELL 3" DEEP 0.025 GA PARABOLIC SHAPED LOW IRRIDESCENT SEMI-SPECULAR AL LOUVER IN HINGED FLOATING DOOR AND BLACK PERIMETER REVEAL, AND ELECTRONIC BALLAST. PAINT AFTER FABRICATION. MINIMUM OVERALL DEPTH SHALL BE 5.25".	LITHONIA METALUX COLUMBIA	PARAMAX PARALUX P4	
AF	3-F32 T-8 3500K			2' x 4' STATIC RECESSED FLUOR W/ 18 CELL 3" DEEP 0.025 GA PARABOLIC SHAPED LOW IRRIDESCENT SEMI-SPECULAR AL LOUVER IN HINGED FLOATING DOOR AND BLACK PERIMETER REVEAL, AND (2) ELECTRONIC BALLASTS. PAINT AFTER FABRICATION. MINIMUM OVERALL DEPTH SHALL BE 5.25". PROVIDE WITH BODINE 'GTD' EMERGENCY POWER TRANSFER DEVICE.	LITHONIA METALUX COLUMBIA	PARAMAX PARALUX P4	(2) BALLASTS FOR MULTI-LEVEL SWITCHING FIXT REQUIRES NORMAL & EMERGENCY SOURCES. SEE DETAIL ON DWG E502
AG	3-F32 T-8 5000K CRI = 85			2' x 4' STATIC RECESSED FLUOR W/ 18 CELL 3" DEEP 0.025 GA PARABOLIC SHAPED LOW IRRIDESCENT SEMI-SPECULAR AL LOUVER IN HINGED FLOATING DOOR AND BLACK PERIMETER REVEAL, AND ELECTRONIC BALLAST. PAINT AFTER FABRICATION. MINIMUM OVERALL DEPTH SHALL BE 5.25".	LITHONIA METALUX COLUMBIA	PARAMAX PARALUX P4	
AH	3-F32 T-8 5000K CRI = 85			2' x 4' STATIC RECESSED FLUOR W/ 18 CELL 3" DEEP 0.025 GA PARABOLIC SHAPED LOW IRRIDESCENT SEMI-SPECULAR AL LOUVER IN HINGED FLOATING DOOR AND BLACK PERIMETER REVEAL, AND (2) ELECTRONIC BALLASTS. PAINT AFTER FABRICATION. MINIMUM OVERALL DEPTH SHALL BE 5.25".	LITHONIA METALUX COLUMBIA	PARAMAX PARALUX P4	(2) BALLASTS FOR MULTI-LEVEL SWITCHING
AJ	3-31W U1 1/2 TB 5000K CRI = 85			2' x 2' STATIC RECESSED FLUOR W/ 9 CELL 3" DEEP 0.025 GA PARABOLIC SHAPED LOW IRRIDESCENT SEMI-SPECULAR AL LOUVER IN HINGED FLOATING DOOR AND BLACK PERIMETER REVEAL, AND ELECTRONIC BALLAST. PAINT AFTER FABRICATION. MINIMUM OVERALL DEPTH SHALL BE 5.25".	LITHONIA METALUX COLUMBIA	PARAMAX PARALUX P4	
AK	3-31W U1 1/2 TB 5000K CRI = 85			2' x 2' STATIC RECESSED FLUOR W/ 9 CELL 3" DEEP 0.025 GA PARABOLIC SHAPED LOW IRRIDESCENT SEMI-SPECULAR AL LOUVER IN HINGED FLOATING DOOR AND BLACK PERIMETER REVEAL, AND (2) ELECTRONIC BALLASTS. PAINT AFTER FABRICATION. MINIMUM OVERALL DEPTH SHALL BE 5.25".	LITHONIA METALUX COLUMBIA	PARAMAX PARALUX P4	(2) BALLASTS FOR MULTI-LEVEL SWITCHING
AL	3-31W U1 1/2 TB 3500K			2' x 2' STATIC RECESSED FLUOR W/ 9 CELL 3" DEEP 0.025 GA PARABOLIC SHAPED LOW IRRIDESCENT SEMI-SPECULAR AL LOUVER IN HINGED FLOATING DOOR AND BLACK PERIMETER REVEAL, AND (2) ELECTRONIC BALLASTS. PAINT AFTER FABRICATION. MINIMUM OVERALL DEPTH SHALL BE 5.25".	LITHONIA METALUX COLUMBIA	PARAMAX PARALUX P4	(2) BALLASTS FOR MULTI-LEVEL SWITCHING
AM	3-F32 T-8 5000K CRI = 85			2' x 4' STATIC RECESSED FLUOR W/ 18 CELL 3" DEEP 0.025 GA PARABOLIC SHAPED LOW IRRIDESCENT SEMI-SPECULAR AL LOUVER IN HINGED FLOATING DOOR AND BLACK PERIMETER REVEAL, AND DIMMABLE BALLAST. PAINT AFTER FABRICATION. MINIMUM OVERALL DEPTH SHALL BE 5.25".	LITHONIA METALUX COLUMBIA	PARAMAX PARALUX P4	DIMMABLE BALLAST TO BE LUTRON HI-LUME FDB OR A/E APPROVED EQUAL
AN	3-31W U1 1/2 TB 5000K CRI = 85			2' x 2' STATIC RECESSED FLUOR W/ 9 CELL 3" DEEP 0.025 GA PARABOLIC SHAPED LOW IRRIDESCENT SEMI-SPECULAR AL LOUVER IN HINGED FLOATING DOOR AND BLACK PERIMETER REVEAL, AND DIMMABLE BALLAST. PAINT AFTER FABRICATION. MINIMUM OVERALL DEPTH SHALL BE 5.25".	LITHONIA METALUX COLUMBIA	PARAMAX PARALUX P4	DIMMABLE BALLAST TO BE LUTRON HI-LUME FDB OR A/E APPROVED EQUAL
BA	4-F32 T-8 3500K			2' x 4' STATIC RECESSED FLUOR W/ 0.125" ACRYLIC PATTERN 12 LENS IN HINGED REGRESSED AL DOOR, ELECTRONIC BALLAST, AND 4.25" MINIMUM DEPTH. PAINT AFTER FABRICATION.	LITHONIA METALUX COLUMBIA	SP GC 4PS	
BB	3-F32 T-8 3500K			2' x 4' STATIC RECESSED FLUOR W/ 0.125" ACRYLIC PATTERN 12 LENS IN HINGED REGRESSED AL DOOR, ELECTRONIC BALLAST, AND 4.25" MINIMUM DEPTH. PAINT AFTER FABRICATION.	LITHONIA METALUX COLUMBIA	SP GC 4PS	
BC	2-F32 T-8 3500K			2' x 4' STATIC RECESSED FLUOR W/ 0.125" ACRYLIC PATTERN 12 LENS IN HINGED REGRESSED AL DOOR, ELECTRONIC BALLAST, AND 4.25" MINIMUM DEPTH. PAINT AFTER FABRICATION.	LITHONIA METALUX COLUMBIA	SP GC 4PS	
BD	2-F32 U1 1/2 TB 3500K			2' x 2' STATIC RECESSED FLUOR W/ 0.125" ACRYLIC PATTERN 12 LENS IN HINGED REGRESSED AL DOOR, ELECTRONIC BALLAST, AND 4.25" MINIMUM DEPTH. PAINT AFTER FABRICATION.	LITHONIA METALUX COLUMBIA	SP GC 4PS	
BF	3-F32 T-8 3500K			2' x 4' STATIC RECESSED FLUOR SECURITY FIXTURE W/ 0.5" CLEAR POLYCARBONATE OUTER LENS AND .125 PATTERN 12 LENS INNER LENS IN ONE-PIECE DIE-FORMED 14 GAUGE STEEL DOOR, ELECTRONIC BALLAST, AND 4.25" MINIMUM DEPTH.	FAIL-SAFE KENALL MORELITE	FSR24 MIGHTY MAC - RMCD MAX-FDPH	PROVIDE FLANGE KIT FOR MOUNTING IN GYP BOARD CEILING.

LIGHTING FIXTURE SCHEDULE

TYPE	LAMPS	120V	277V	DISCRPTION	MANUFACTURER	CATALOG SERIES	REMARKS
BG	3-F32 T-8 3500K			2' x 4' STATIC RECESSED FLUOR SECURITY FIXTURE W/ 0.5" CLEAR POLYCARBONATE OUTER LENS AND .125 PATTERN 12 LENS INNER LENS IN ONE-PIECE DIE-FORMED 14 GAUGE STEEL DOOR, ELECTRONIC BALLAST, AND 4.25" MINIMUM DEPTH. PROVIDE WITH BODINE 'GTD' EMERGENCY POWER TRANSFER DEVICE.	FAIL-SAFE KENALL MORELITE	FSR24 MIGHTY MAC - RMCD MAX-FDPH	PROVIDE FLANGE KIT FOR MOUNTING IN GYP BOARD CEILING. FIXT REQUIRES NORMAL & EMERGENCY SOURCES. SEE DETAIL ON DWG E502
BH	4-F32 T-8 3500K			2' x 4' STATIC RECESSED FLUOR W/ 0.125" ACRYLIC PATTERN 12 LENS IN HINGED REGRESSED AL DOOR, DIMMING BALLAST, AND 4.25" MINIMUM DEPTH. PAINT AFTER FABRICATION.	LITHONIA METALUX COLUMBIA	SP GC 4PS	DIMMABLE BALLAST TO BE LUTRON HI-LUME FDB OR A/E APPROVED EQUAL
BJ	3-F32 T-8 3500K			2' x 4' STATIC RECESSED FLUOR W/ 0.125" ACRYLIC PATTERN 12 LENS IN HINGED REGRESSED AL DOOR, (2) ELECTRONIC BALLASTS, AND 4.25" MINIMUM DEPTH. PAINT AFTER FABRICATION.	LITHONIA METALUX COLUMBIA	SP GC 4PS	(2) BALLASTS FOR MULTI-LEVEL SWITCHING
BK	3-F32 U1 1/2 TB 3500K			2' x 2' STATIC RECESSED FLUOR W/ 0.125" ACRYLIC PATTERN 12 LENS IN HINGED REGRESSED AL DOOR, ELECTRONIC BALLAST, AND 4.25" MINIMUM DEPTH. PAINT AFTER FABRICATION.	LITHONIA METALUX COLUMBIA	SP GC 4PS	
BL	3-F32 T-8 5000K CRI = 85			2' x 4' STATIC RECESSED FLUOR W/ 0.125" ACRYLIC PATTERN 12 LENS IN HINGED REGRESSED AL DOOR, ELECTRONIC BALLAST, AND 4.25" MINIMUM DEPTH. PAINT AFTER FABRICATION.	LITHONIA METALUX COLUMBIA	SP GC 4PS	
BM	3-F32 U1 1/2 TB 5000K CRI = 85			2' x 2' STATIC RECESSED FLUOR W/ 0.125" ACRYLIC PATTERN 12 LENS IN HINGED REGRESSED AL DOOR, ELECTRONIC BALLAST, AND 4.25" MINIMUM DEPTH. PAINT AFTER FABRICATION.	LITHONIA METALUX COLUMBIA	SP GC 4PS	
BN	3-F32 U1 1/2 TB 3500K			2' x 2' STATIC RECESSED FLUOR W/ 0.125" ACRYLIC PATTERN 12 LENS IN HINGED REGRESSED AL DOOR, DIMMING BALLAST, AND 4.25" MINIMUM DEPTH. PAINT AFTER FABRICATION.	LITHONIA METALUX COLUMBIA	SP GC 4PS	DIMMABLE BALLAST TO BE LUTRON HI-LUME FDB OR A/E APPROVED EQUAL
BP	4-F32 T-8 3500K			2' x 4' STATIC RECESSED FLUOR W/ 0.125" ACRYLIC PATTERN 12 LENS IN HINGED REGRESSED AL DOOR, ELECTRONIC BALLAST, AND 4.25" MINIMUM DEPTH. PAINT AFTER FABRICATION. PROVIDE WITH BODINE 'GTD' EMERGENCY POWER TRANSFER DEVICE.	LITHONIA METALUX COLUMBIA	SP GC 4PS	FIXT REQUIRES NORMAL & EMERGENCY SOURCES. SEE DETAIL ON DWG E502
CA	2-F32 T-8 3500K			2' x 4' RECESSED DIRECT/INDIRECT FLUORESCENT LAMP CENTER-MOUNT FIXT W/ BI-DIRECTIONAL DISTRIBUTION PERFORATED SHIELD, AND ELECTRONIC BALLAST	FOCAL POINT METALUX ALERA	LUNA OVATION LUMIO	
CB	2-31W U1 1/2 TB 3500K			2' x 2' RECESSED DIRECT/INDIRECT FLUORESCENT LAMP CENTER-MOUNT FIXT W/ BI-DIRECTIONAL DISTRIBUTION PERFORATED SHIELD, AND ELECTRONIC BALLAST	FOCAL POINT METALUX ALERA	LUNA OVATION LUMIO	

ADDENDUM # 2

CL 3) LINEAR FLUORESCENT FIXTURES - DWGS E500 & E501: All linear fluorescent fixtures shall be provided with an integral factory installed disconnecting means as required by NFPA 70 - 2008.

GENERAL LIGHTING FIXTURE NOTES:

- ALL LIGHTING FIXTURES SHALL BE IN ACCORDANCE WITH THE FIXTURE SCHEDULE. THE FIXTURE SCHEDULE PROVIDES THE MANUFACTURER'S FIXTURE CATALOG SERIES. THE FIXTURE PROVIDED SHALL CONFORM TO THE DESCRIPTION IN THE FIXTURE SCHEDULE, THE MANUFACTURER'S CATALOG SERIES, AND ALL PROVISIONS OF THE CONTRACT DOCUMENTS.
- THE CONTRACTOR SHALL PROVIDE THE LIGHTING FIXTURES WITH THE MOUNTING METHOD REQUIRED FOR THE CEILING SYSTEM SET FORTH ON THE ARCHITECTURAL DRAWINGS, SUCH AS, THE REFLECTED CEILING PLANS, AND ROOM FINISH SCHEDULE, ETC.
- THE ACTUAL APERTURE DIMENSION OF ALL LIGHTING FIXTURES PROVIDED SHALL BE PLUS OR MINUS 1/2 INCH ON THE NOMINAL VALUE INDICATED.
- ALL SURFACE MOUNTED LIGHTING FIXTURES TO BE FURNISHED AND INSTALLED ON LOW DENSITY CEILINGS SHALL BE UL LISTED FOR THAT APPLICATION.
- FLUORESCENT BALLASTS SHALL BE ELECTRONIC TYPE.
- PRISMATIC LENSES SHALL BE 0.125 INCHES THICK PATTERN 12 VIRGIN ACRYLIC WITH A MAXIMUM PRISM PENETRATION OF 0.080 INCHES AND A MINIMUM WEIGHT OF 8 OUNCES PER SQUARE FOOT.
- ALL FLUORESCENT FIXTURES WITH PARABOLIC LOUVERS SHALL BE FURNISHED WITH SEALED POLYETHYLENE WRAPPER WHICH SHALL BE REMOVED BY THE CONTRACTOR WITHIN 1 WEEK OF FINAL ACCEPTANCE BY OWNER AND A/E.
- FIXTURES SHALL NOT BE SUPPORTED FROM SUSPENDED CEILING SUPPORTS UNLESS ADDITIONAL CEILING FRAMING AND SUPPORTS ARE ADDED BY THE CONTRACTOR, TO KEEP CEILING RIGID.
- CONNECTIONS TO RECESSED FIXTURES SHALL BE MADE WITH 1/2" MINIMUM FLEXIBLE CONDUIT 4' TO 6' IN LENGTH FROM FIXTURE TO OUTLET BOX. 10.
- AT THE CONCLUSION OF THE WORK, EACH FIXTURE MUST BE EQUIPPED WITH THE PROPER NUMBER OF NEW LAMPS OF THE CORRECT SIZE, ALL IN GOOD OPERATING CONDITION.

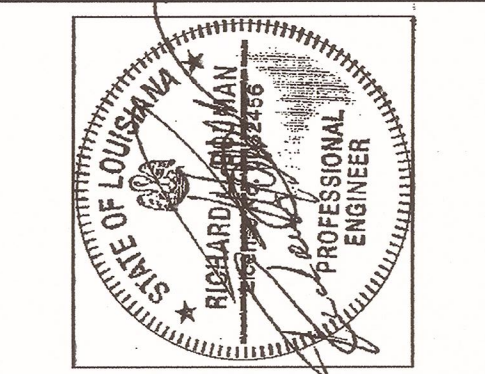
"For Reference Only"

PACKAGE
F

UMOB, ELEV.
TOWER, GARAGE
DEMO, IH LAB /
UMOB ROOFS
+
FUEL TANKS

BlitchKnevel
ARCHITECTS

NEW ORLEANS, LOUISIANA 70130
757 ST. CHARLES AVENUE
(504) 524-4634
FAX (504) 524-5128



URS
architects • engineers • planners

CONSULTANTS:
INTERM UNIVERSITY HOSPITAL & LEVEL I TRAUMA CENTER
PROJECT NUMBER: 01-107-09B-13, Part 08
SITE ID: 1-35-069 STATE ID NO.: 08923

LSU University Hospital
HEALTH CARE SERVICE DIVISION
Medical Center of Louisiana at New Orleans

MARK	DATE	DESCRIPTION

DRAWING ISSUED: 2/11/08

PROJECT NO: 0580-F

DRAWING TITLE:
LIGHTING FIXTURE
SCHEDULE
1 OF 2

DRAWING NUMBER:
E500
SHEET 200 OF 234

LIGHTING FIXTURE SCHEDULE						
TYPE	LAMPS	120V 277V	DISCRIPTION	MANUFACTURER	CATALOG SERIES	REMARKS
DA	1-32W TRI-TUBE		RECESSED FLUOR OPEN DOWNLIGHT W/ 8" ROUND APERTURE, 0.050" THICK CLEAR SPECULAR AL REFLECTOR, & WHITE TRIM RING. COMPLETE W/ MTG BRACKET, PREWIRED JB, & ELECTRONIC BALLAST. MAXIMUM DEPTH 12". VERTICAL LAMP	PORTFOLIO LIGHTOLIER GOTHAM	C8042 8056 AF	
DB	1-32W TRI-TUBE		RECESSED FLUOR DOWNLIGHT W/ 8" ROUND APERTURE, 0.050" THICK CLEAR SPECULAR AL REFLECTOR, WHITE TRIM RING, ACRYLIC LENS, & UL LISTED FOR WET LOCATIONS. COMPLETE W/ MTG BRACKET, PREWIRED JB, & ELECTRONIC BALLAST. MAXIMUM DEPTH 12". VERTICAL LAMP.	PORTFOLIO LIGHTOLIER GOTHAM	C8042 8056 AF	
DC	1-150W A21 INCAND		RECESSED INCAND OPEN DOWNLIGHT W/ 8" ROUND APERTURE, 0.050" THICK CLEAR SPECULAR AL REFLECTOR, WHITE TRIM RING. COMPLETE W/ MTG BRACKET & PREWIRED JB. MAXIMUM DEPTH 12"	PORTFOLIO LIGHTOLIER GOTHAM	HD7 7055 A	
DD	1-32W TRI-TUBE		RECESSED FLUOR OPEN DOWNLIGHT W/ 8" ROUND APERTURE, 0.050" THICK CLEAR SPECULAR AL REFLECTOR, & WHITE TRIM RING. COMPLETE W/ MTG BRACKET, PREWIRED JB, & DIMMING BALLAST. MAXIMUM DEPTH 12". VERTICAL LAMP	PORTFOLIO LIGHTOLIER GOTHAM	C8042 8056 AF	DIMMABLE BALLAST TO BE LUTRON HI-LUME FDB OR A/E APPROVED EQUAL
DF	1-42W TRI-TUBE		RECESSED FLUOR LENSED DOWNLIGHT W/ 8" ROUND APERTURE, 0.050" THICK CLEAR SPECULAR AL REFLECTOR, & WHITE TRIM RING, ACRYLIC LENS, & UL LISTED FOR WET LOCATIONS. COMPLETE W/ MTG BRACKET, PREWIRED JB, & ELECTRONIC BALLAST. MAXIMUM DEPTH 8". HORIZONTAL LAMP.	GOTHAM PORTFOLIO	LGf C8142	
FA	3-F32 T-8 3500K		4' INDUSTRIAL FLUOR WITH WHITE BAKED ENAMEL FINISH HAVING 10% UPLIGHT, 13% CROSSWISE SHIELDING AND FULL END PLATES	METALUX LITHONIA COLUMBIA	DIM AF KL4	PENDANT MOUNTED AT MIN 8'-0" BOF.
FB	2-F32 T-8 3500K		4' INDUSTRIAL FLUOR WITH WHITE BAKED ENAMEL FINISH HAVING 10% UPLIGHT, 13% CROSSWISE SHIELDING AND FULL END PLATES	METALUX LITHONIA COLUMBIA	DIM AF KL4	PENDANT MOUNTED AT MIN 8'-0" BOF.
JA	1-42W TRI-TUBE		NON-METALLIC FLUOR VAPORPROOF FIXT, CEILING MTD W/ GUARD AND CLEAR GLASS GLOBE, AND UL LISTED FOR DAMP LOCATIONS. PROVIDE WITH BALLAST CAPABLE OF 26 THRU 42 WATT.	CANLET DAYBRITE	ARTIST SERIES VAPOLET VFN	
JB	1-42W TRI-TUBE		NON-METALLIC FLUOR VAPORPROOF FIXT, WALL MTD W/ GUARD AND CLEAR GLASS GLOBE, AND UL LISTED FOR DAMP LOCATIONS. PROVIDE WITH BALLAST CAPABLE OF 26 THRU 42 WATT.	CANLET DAYBRITE	ARTIST SERIES VAPOLET VFN	FOR ELEVATOR PITS ONLY
KA	1-F32 T-8 3500K		4' STRIPLIGHT W/ ELECTRONIC BALLAST	LITHONIA METALUX COLUMBIA	C SN LN	
MA	2-F32 T-8 3500K		4' ALL PURPOSE WALL BRACKET W/ OPAQUE WHITE DIFFUSER; AND ELECTRONIC BALLAST. 180° LIGHT DISTRIBUTION	METALUX LITHONIA COLUMBIA	WC BC W4	MOUNT OVER EXISTING JUNCTION BOXES IN STAIRWELLS, UNO.
MB	2-F17 T-8 3500K		2' ALL PURPOSE WALL BRACKET W/ OPAQUE WHITE DIFFUSER; AND ELECTRONIC BALLAST. 180° LIGHT DISTRIBUTION	METALUX LITHONIA COLUMBIA	WC BC W4	MOUNT OVER EXISTING JUNCTION BOXES IN STAIRWELLS, UNO.
SA	1-42W TRI-TUBE		WALL MOUNTED FLUOR LIGHTING FIXTURE W/ DIE-CAST ALUMINUM HOUSING, CLEAR POLYCARBONATE REFRACTOR, PHOTOCELL, TEXTURED DARK BRONZE FINISH, AND UL LISTED FOR WET LOCATIONS.	LITHONIA DAYBRITE	TWA VL	
SB	1-150W PULSE START METAL HALIDE		PARKING LOT LIGHTING FIXTURE WITH DIE CAST, SOFT CORNER ALUMINUM HOUSING WITH 0.12" NOMINAL WALL THICKNESS, SEGMENTED REFLECTOR, DIE CAST DOOR FRAME, 4" ARM, MAGNETIC BALLAST, 208VAC, FLAT GLASS LENS, DARK BRONZE FINISH, PHOTOCELL, AND UL LISTED FOR WET LOCATIONS. PROVIDE WITH TYPE III ASYMETRICAL DISTRIBUTION.	KIM LITHONIA McGRAW	SAR KAD CAL (CONCOURSE 111)	PROVIDE 1 LUMINAIRE PER ARM. MOUNTED ON 20'-0" SQUARE ALUMINUM POLE. FIXTURE IS 208VAC

LIGHTING FIXTURE SCHEDULE						
TYPE	LAMPS	120V 277V	DISCRIPTION	MANUFACTURER	CATALOG SERIES	REMARKS
			EMERGENCY LIGHTING UNIT W/ 2 SEALED BEAM 8W QUARTZ LAMPS AND 6V LEAD CALCIUM BATTERY. UNIT SHALL BE WATER RESISTANT NEMA 4 CONSTRUCTION.	SURE-LITES LITHONIA EMERGI-LITE	UMB ELU LS	WIRE AHEAD OF LOCAL SWITCHING. MOUNT AT 8'-0" AFF
	LED EVEN ILLUM		SINGLE FACE EXIT; AC ONLY W/ LED LAMP MODULES; RED UNIFORMLY ILLUMINATED FACE; DIE-CAST ALUMINUM HOUSING, UNIVERSAL ARROWS AND MTG; WHITE FINISH; VANDEL-RESISTANT SHIELD; AND UL 924 LISTED.	LITHONIA SURE-LITES DUAL-LITE	LE CX SEMPRA SC	WIRE AHEAD OF LOCAL SWITCHING; ARROWS INDICATE DIRECTION OF EGRESS; MOUNT AT 8'-0" AFF
	LED EVEN ILLUM		DOUBLE FACE EXIT; AC ONLY W/ LED LAMP MODULES; RED UNIFORMLY ILLUMINATED FACE; DIE-CAST ALUMINUM HOUSING, UNIVERSAL ARROWS AND MTG; WHITE FINISH; VANDEL-RESISTANT SHIELD; AND UL 924 LISTED.	LITHONIA SURE-LITES DUAL-LITE	LE CX SEMPRA SC	WIRE AHEAD OF LOCAL SWITCHING; ARROWS INDICATE DIRECTION OF EGRESS; MOUNT AT 8'-0" AFF

"For Reference Only"

ADDENDUM # 2

CL. 3) LINEAR FLUORESCENT FIXTURES - DWGS E500 & E501: All linear fluorescent fixtures shall be provided with an integral factory installed disconnecting means as required by NFPA 70 - 2008.

GENERAL LIGHTING FIXTURE NOTES:

- ALL LIGHTING FIXTURES SHALL BE IN ACCORDANCE WITH THE FIXTURE SCHEDULE. THE FIXTURE SCHEDULE PROVIDES THE MANUFACTURER'S FIXTURE CATALOG SERIES. THE FIXTURE PROVIDED SHALL CONFORM TO THE DESCRIPTION IN THE FIXTURE SCHEDULE, THE MANUFACTURER'S CATALOG SERIES, AND ALL PROVISIONS OF THE CONTRACT DOCUMENTS.
- THE CONTRACTOR SHALL PROVIDE THE LIGHTING FIXTURES WITH THE MOUNTING METHOD REQUIRED FOR THE CEILING SYSTEM SET FORTH ON THE ARCHITECTURAL DRAWINGS, SUCH AS, THE REFLECTED CEILING PLANS, AND ROOM FINISH SCHEDULE, ETC.
- THE ACTUAL APERTURE DIMENSION OF ALL LIGHTING FIXTURES PROVIDED SHALL BE PLUS OR MINUS 1/2 INCH ON THE NOMINAL VALUE INDICATED.
- ALL SURFACE MOUNTED LIGHTING FIXTURES TO BE FURNISHED AND INSTALLED ON LOW DENSITY CEILINGS SHALL BE UL LISTED FOR THAT APPLICATION.
- FLUORESCENT BALLASTS SHALL BE ELECTRONIC TYPE.
- PRISMATIC LENSES SHALL BE 0.125 INCHES THICK PATTERN 12 VIRGIN ACRYLIC WITH A MAXIMUM PRISM PENETRATION OF 0.080 INCHES AND A MINIMUM WEIGHT OF 8 OUNCES PER SQUARE FOOT.
- ALL FLUORESCENT FIXTURES WITH PARABOLIC LOUVERS SHALL BE FURNISHED WITH SEALED POLYETHYLENE WRAPPER WHICH SHALL BE REMOVED BY THE CONTRACTOR WITHIN 1 WEEK OF FINAL ACCEPTANCE BY OWNER AND A/E.
- FIXTURES SHALL NOT BE SUPPORTED FROM SUSPENDED CEILING SUPPORTS UNLESS ADDITIONAL CEILING FRAMING AND SUPPORTS ARE ADDED BY THE CONTRACTOR, TO KEEP CEILING RIGID.
- CONNECTIONS TO RECESSED FIXTURES SHALL BE MADE WITH 1/2" MINIMUM FLEXIBLE CONDUIT 4' TO 6' IN LENGTH FROM FIXTURE TO OUTLET BOX. 10.
- AT THE CONCLUSION OF THE WORK, EACH FIXTURE MUST BE EQUIPPED WITH THE PROPER NUMBER OF NEW LAMPS OF THE CORRECT SIZE, ALL IN GOOD OPERATING CONDITION.

PACKAGE

F

UMOB, ELEV.
TOWER, GARAGE
DEMO, IH LAB /
UMOB ROOFS
+
FUEL TANKS

MARK DATE DESCRIPTION

DRAWING ISSUED: 2/11/08

PROJECT NO: 0580-F

DRAWING TITLE:

LIGHTING FIXTURE
SCHEDULE
2 OF 2

DRAWING NUMBER:

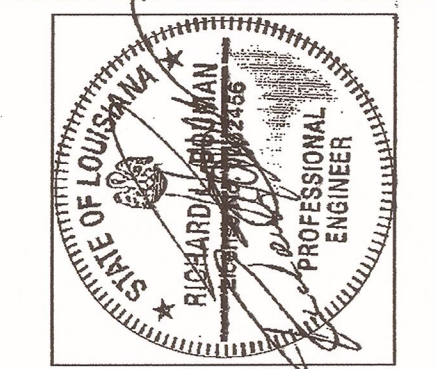
E501

SHEET 201 OF 234

CONSULTANTS:

INTERIM UNIVERSITY HOSPITAL & LEVEL I TRAUMA CENTER
PROJECT NUMBER: 01-07-05B-13, Part GB
SITE ID: 1-36-069 STATE ID NO. 09923

LSU
University Hospital
HEALTH CARE SERVICE DIVISION
Medical Center of Louisiana at New Orleans



URS
architects • engineers • planners

BlitchKnevel
ARCHITECTS
NEW ORLEANS, LOUISIANA 70130
751 ST. CHARLES AVENUE
FAX (504) 524-4631

RFI #7-14